

ICE

Inner City Enterprises



Active Collaboration with Inner City Stakeholders
*Generate increased **foot-traffic** within the Inner City*
*Influence outcomes to increase **vibrancy***
***Safety** (and CPTED principles)*
Implementation of revitalisation projects
*Align and coordinate **service** delivery (within Inner City)*
*Inform and develop Inner City **Policy***
*Inform and promote the City **activities** and future **vision***
Community Pride

GM (Nick Dallimore)
Inner City Enterprise (ICE)

GM (Oscar Nathan)
Destination Rotorua Marketing
(DRM)

Operations Manager
Richard Horn
12 Aug

Projects
Manager
Vacant

Business **Marketing**
Manager
Renee Nathan

DRM Team
Events Team
Client Support Manager
Arts & Youth Team

City Safe
Guardians x 4

Visitor Services
(rostered) Aug

Customer Services
(rostered) Oct

Visitor Information and
I Site Manager
(Graham Brownrigg)
Customer Centre Manager
(Roanna Dunn)

Parking Building x 1

Parking Technician x 1

Parking Technician
(contractor)

Parking Team
Parking
Administrator

Regulatory Services Manager
(Neven Hill)

Toilet Attendant
(contract / Spotless)

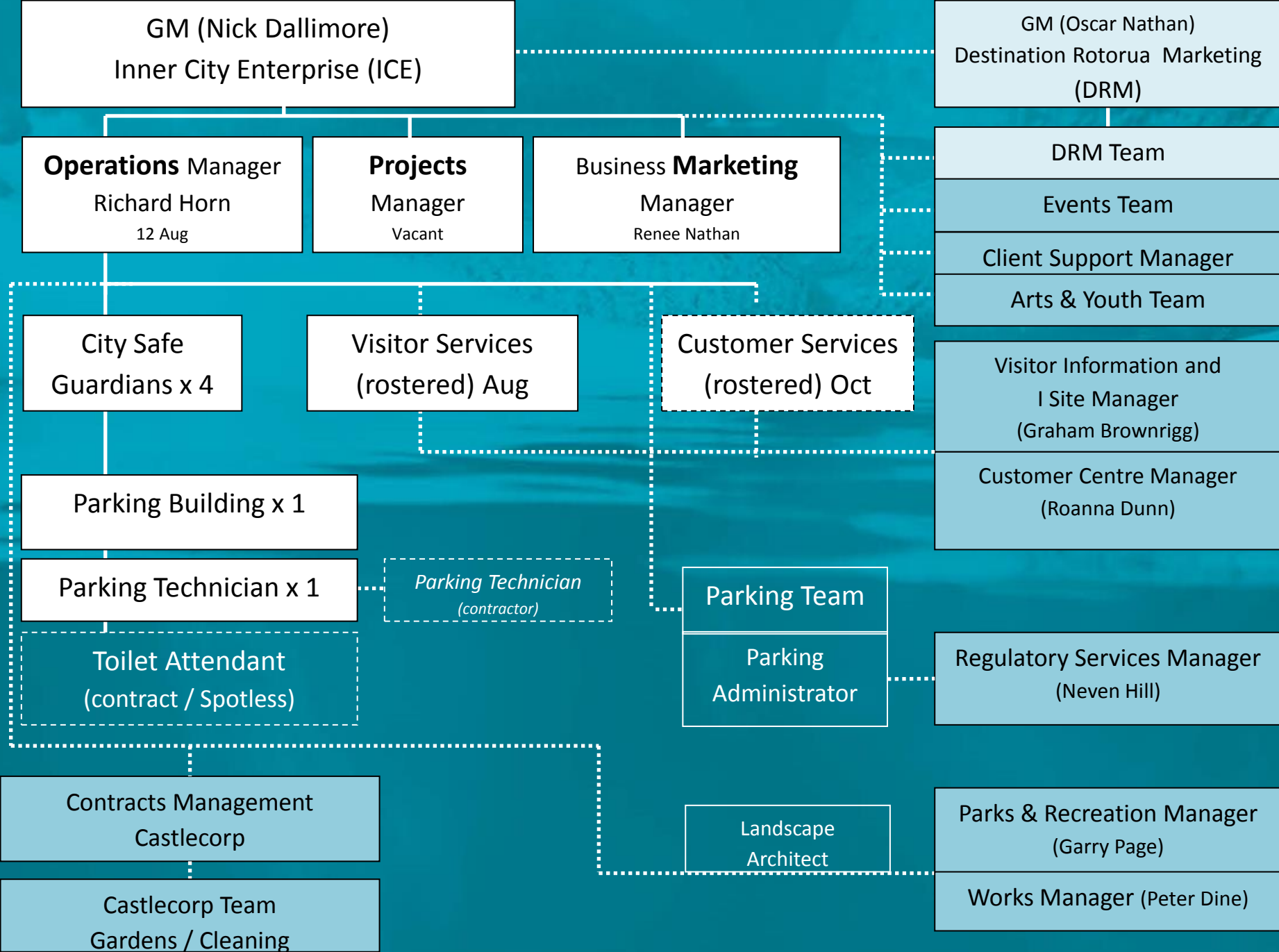
Contracts Management
Castlecorp

Landscape
Architect

Parks & Recreation Manager
(Garry Page)

Castlecorp Team
Gardens / Cleaning

Works Manager (Peter Dine)



ICE

Inner City Enterprises



Purpose

An **integrated** delivery of RDC service in the **Rotorua Inner City** with the primary intention of **stimulating more vibrancy and activity in the heart of the City.**

- Integrated and efficient service delivery of:
 - Inner City Revitalisation program
 - Revised Inner City on-street Parking
 - Revised Pukuatua St parking building operation
 - Stakeholder communication and engagement
 - Revision of the City Focus
 - Inner City security initiatives
 - Inner City Investment Profile and Perception change
 - Building stock, change of use opportunities and structural requirements
 - “A whole of RDC team” approach to the delivery of core RDC inner city services (including Castlecorp)

Contact Us

Rotorua: living the dream

world class
in every
way

Nick Dallimore, General Manager
nick.dallimore@rdc.govt.nz / 07 351 8307

Renee Nathan, Business Marketing Manager
renee.nathan@rdc.govt.nz / 07 351 7110

Richard Horn, Operation Manager
richard.horn@rdc.govt.nz / 07 351 8326

Project Manager - *vacant*

