

ROTORUA

NEW ZEALAND



product directory 2007

ROTORUA
feel the spirit
Manaakitanga

spirit of Rotorua

“He kakano ahau, ruia mai i Rangiatea”

I am a seed, scattered from Rangiatea

HINEMOA AND TUTANEKAI

Rotorua's most famous love story started more than 300 years ago on the shores of sacred Mokoia Island, as Tutanekai played his koauau (flute) thinking of his love Hinemoa.

Hinemoa was the beautiful daughter of a prominent chief who forbade the love between the young couple as Tutanekai was not of high enough stature within his tribe.

Hinemoa would sit on Iri Iri Kapua (her rock) and listen to his musical notes floating over the water of Lake Rotorua to her on the mainland. As time passed and their love grew with each meeting, her tribe did all they could to prevent her being with Tutanekai, including removing waka (canoes) from the shores of the lake so she could not travel to be by his side.

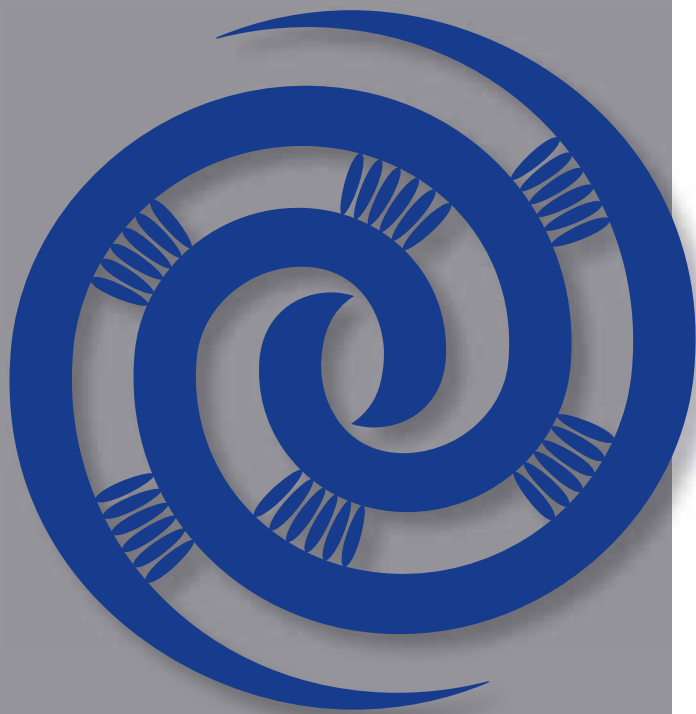
One dark night, the call of the koauau proved too much for Hinemoa who ran to the shores ready to swim with empty gourds tied to her body to help keep her afloat over the four kilometre journey.

Hours later she made it to Mokoia Island, cold and tired. She rested in Waikimihia, a small hot pool on the edge of the island to warm her body and wait for her love to find her – and he did. They were never to be parted again, bringing permanent peace between their two tribes.

This true story formed the basis of the world-renowned song Pokarekare Ana.

In the early 1900s, with Rotorua's tourism industry flourishing, descendants of Hinemoa and Tutanekai became some of the first Maori guides in the city ... the people of Rotorua continue this proud tradition today.





The takarangi design (above) symbolises many things relative to Rotorua - the blend of Maori and European cultures, the circular shape of the mud pool and the koru (unfurling tree fern). Traditionally, the takarangi was incorporated on the sternpost of the Waka (Maori canoe) to allow the wind to pass through, helping to stabilise it and maintain its true course.



ROT@RUAA
feel the spirit®
Manaakitanga

This is our catchcry and it holds a pretty powerful promise. It is your invitation to experience the essence - the spirit of this extraordinary slice of New Zealand.

Manaakitanga is a deep-rooted concept in Maori culture. It implies guardianship - over our land (whenua), treasures (taonga), people (tangata) and you - our visitors (manuhiri). As your hosts we are fiercely proud of this tradition and it is our responsibility to ensure you receive the very best of ourselves, our history and our time.

www.rotoruaNZ.com

contents

Spirit of Rotorua	1
CONTACT DETAILS	2
ALL YOU NEED TO KNOW ABOUT ROTORUA	3
EVENTS CALENDAR FOR 2006 - 2007	4
DESTINATIONAL INFORMATION	
Spirit of a Living Culture	6
Spirit of the Earth	8
Challenge your Spirit	10
Rejuvenate your Spirit	12
Free your Spirit	14
ITINERARIES	16-19
ACCOMMODATION	
Accommodation Providers	22-33
ATTRACTIONS & ACTIVITIES	
Maori Performance	36
Attraction and Activity Providers	37-54
SERVICES AND TRANSPORT	
Services and Transport Providers	56-59
ROTORUA IMAGE LIBRARY	60
TRADE RESOURCES	61
FULL ADVERTISER INDEX	62
MAP	63

PHOTOGRAPHIC CREDIT

Graeme Murray.
Multi Day Adventures.
Rob Tucker.
Volcanic Air Safaris.
Whakarewarewa - The Thermal Village.

DESTINATION ROTORUA TOURISM MARKETING

Address: 1106 Arawa Street, Private Bag 3007, Rotorua
Tel: +64 7 348 4133
Fax: +64 7 349 4133
Email: marketing@rotoruaNZ.com
Website: www.rotoruaNZ.com

At the time of printing, Destination Rotorua Tourism Marketing has, to the best of its knowledge, been supplied accurate and up-to-date information, however Destination Rotorua Tourism Marketing cannot be held responsible for any changes or misinformation supplied. All rights reserved. No part of this guide may be reproduced without prior permission of the publisher.

all you need to know about Rotorua

The Rotorua district has a multi-cultural population of approximately 68,000 people – around 35% are Maori. The district is centred around a thriving city on the southern shore of Lake Rotorua, and extends to include a number of rural and lakeside communities. An international tourism icon, Rotorua is renowned as the heartland of Maori culture.

Rotorua attracts some 1.6 million visitors annually. The lakes district has 15 fishable lakes packed with rainbow and brown trout. The lakes, all formed from the craters of extinct volcanoes, are a popular attraction for many water-based activities. From the moment you enter Rotorua you know you're somewhere quite different. Whether it be the sneaky threads of steam finding unlikely escape routes in parks, pathways and streets or the distinct scent of sulphur wafting through geothermal hot spots, Rotorua offers an impressive welcome.

HOW TO GET HERE

Located in the central North Island, Rotorua is well connected to the rest of New Zealand, and the world, through a network of air and road links. The city is a leisurely three hour drive from Auckland (234km), and only a 5-6 hour drive from Wellington (457km). The Rotorua airport is one of the busiest domestic terminals in the country, offering services to Auckland, Wellington, Christchurch and Queenstown.

HOW TO GET AROUND

Rotorua's well developed infrastructure and an excellent public transport system means minimal travelling time within the city. To explore the outer environs and lakes, a rental car is suggested and most major companies have depots in Rotorua.

WHAT'S THE WEATHER LIKE?

Rotorua enjoys a pleasant climate - plenty of sun in summer with crisp clear days in winter. Rotorua averages over 2000 hours of sunshine and just over 140cm of rain each year.

Temperature:
Summer: (Dec – Feb) Daytime 21 – 29°C
Autumn: (Mar – May) Daytime 15 – 26°C
Winter: (Jun – Aug) Daytime 9 – 16°C
Spring: (Sep – Nov) Daytime 13 – 21°C

GOODS AND SERVICES TAX

All purchases in New Zealand are subject to 12.5% GST (Goods and Services Tax). This is usually included in published retail prices for all goods and services. Overseas visitors who get their purchase sent home directly by selected retailers do not have to pay GST.

DEPARTURE TAX

Passengers must pay NZD\$5 Departure Tax at Rotorua Airport after check-in and prior to proceeding to the departure lounge.

SHOPPING

Rotorua city centre has over 250 shops to choose from, including specialty department stores, fashion stores, book shops, pharmacies, arts, crafts, and photographic outlets. Generally, city trading hours are Monday to Friday 9am until 5pm, Saturdays 9am until 1pm. Some stores are also open on Sunday.

DINING

With more than 50 restaurants to choose from, Rotorua offers a wide range of casual and fine dining options. Chinese, Japanese, Italian, Korean, Mexican, Indian, Mediterranean and European restaurants abound. Visitors to the city should also try a traditional Maori hangi.

i-SITE VISITOR INFORMATION TRAVEL OFFICE

For FIT clients requiring information on what to see and do around Rotorua and the rest of New Zealand, visit the i-site.

Address: 1167 Fenton Street, Rotorua
Opening Hours:
Open 7 days from 8am

NZ Freephone : 0800 ROTORUA
(0800 768 678)

Tel: +64 7 348 5179
Fax: +64 7 348 6044



events

2006

AUGUST

DON PASQUALE A COMIC OPERA SET TO DONIZETTI'S GLORIOUS MUSIC

N-DURO MTB SERIES CLASSIC MOUNTAIN BIKE RACES CLASSIC MOUNTAIN BIKE RACES

TOUGH GUY & GAL CHALLENGE NZ'S MOST EXTREME OFF-ROAD RUNNING CHALLENGE.

UCI MOUNTAIN BIKE & TRIALS WORLD CHAMPIONSHIPS WITNESS THE WORLD'S BEST MOUNTAIN BIKERS IN ACTION

SEPTEMBER

KURANGAITUKU NETBALL TOURNAMENT NEW ZEALAND'S LARGEST NETBALL CLUB TOURNAMENT

N-DURO RUN SERIES #3 OFF ROAD RUNNING SERIES, 10KM, 20KM OR 40KM OPTIONS

OCTOBER

N-DURO AMAZON GIRLS WOMENS ONLY MOUNTAIN BIKE CHALLENGE

VO2 MAX ROTORUA EKIDEN RELAY TRADITIONAL JAPANESE TEAM RUNNING RELAY

2006 KIWI CHALLENGE NZ'S PREMIER 4X4 MOTORSPORT ENDURO AND WINCHING COMPETITION

NOVEMBER

HOTEL IBIS BIKE THE LAKE

SCENIC, YET CHALLENGING CYCLE AROUND LAKE ROTORUA

MAGMA SHORT FILM FESTIVAL A COMPREHENSIVE PROGRAMME OF SHORT FILM

BIKE VEGAS 6 HOUR MOUNTAIN BIKE RACE

DECEMBER

MARDI GRAS FAMILY CONCERT TO CELEBRATE THE NEW YEAR

REREWHAKAAITU RODEO HARD HITTING RODEO ACTION

2007

JANUARY

WILD MOA ROTORUA'S PREMIER MULTISPORT EVENT

WORLD INVITATION STOCK CAR CHAMPIONSHIPS AN INTERNATIONAL SPEEDWAY MEET

OPERA IN THE PA OPERA STAGED IN A UNIQUE ROTORUA SETTING

BIKE VEGAS BLUE LAKE MULTISPORT FESTIVAL A CHALLENGING WEEKEND OF MULTISPORT ACTION

FEBRUARY

LAKESIDE CONCERT PERFORMANCE AT ITS VERY BEST

24 HOURS OF N-DURO SUMMER 24-HOUR TEAM RELAY

ARTS FESTIVAL – TE IHI TE WEHI

EXCITING PROGRAMME OF WORLD CLASS ARTS & CULTURE

MARCH

LAST OF THE SUMMER WINE

JAZZ AND BLUES, FOOD, WINE, FASHION AND FUN

ROTORUA FOREST HALF MARATHON

21.1KM CIRCUIT THROUGH WHAKAREWAREWA FOREST

INTERNATIONAL TWO-DAY WALK

A WEEKEND OF LEISURE WALKS ON THE BEAUTIFUL ROTORUA TRAILS

WORLD VINTAGE SOFTBALL CARNIVAL A CELEBRATION OF SOFTBALL

100K FLYER – ROTORUA TO TAUPO

CYCLE 100K THROUGH MAGNIFICENT COUNTRYSIDE

MORE FM TRIWOMAN SERIES

INSPIRATIONAL WOMEN'S TRIATHLON SERIES

APRIL

JAMBALAYA

NEW ZEALAND'S FESTIVAL OF RHYTHM, DANCE AND CARNIVAL

XTERRA NEW ZEALAND

INTERNATIONAL OFF ROAD TRIATHLON SERIES

SPECIAL K DUATHLON

WOMENS RUNNING AND BIKING EVENT

LION FOUNDATION ROTORUA

MARATHON

ROTORUA'S ICONIC MARATHON AROUND LAKE ROTORUA

MAY

WORLD WATERSKI RACING CHAMPIONSHIPS

WATCH THE WORLD'S BEST RACE ON LAKE ROTORUA

CATEYE MOONRIDE

12 & 24-HOUR MOUNTAIN BIKE EVENT

TAGGED TROUT

ANNUAL TROUT FISHING TOURNAMENT

TRENZ 2007

NEW ZEALAND'S MOST SIGNIFICANT ANNUAL INTERNATIONAL TOURISM TRADESHOW

JUNE

TARGA RALLY

250KM OF CLOSED COMPETITION STAGES OVER THREE DAYS

RHAPSODY ROTORUA

INTERNATIONAL FESTIVAL OF YOUTH MUSIC AND PERFORMING ARTS

RALLY OF ROTORUA

INTERNATIONAL RALLYING ON ROTORUA'S DOORSTEP

JULY

YOUNG FARMER NATIONALS

THE SEARCH FOR NEW ZEALAND'S TOP YOUNG FARMERS

For more information on any of the above events or to view a complete lists of Rotorua events go to www.rotoruaNZ.com/events



After months of hard work and a huge team effort by Destination Rotorua Tourism Marketing staff, Rotorua has secured the biggest international tourism trade show to be held in New Zealand. TRENZ 2007 is to be held in Rotorua between May 21-24, 2007.

This influential tradeshow has never been held outside of either Auckland or Christchurch in its 23-year history. TRENZ 2007 will be staged in the brand new \$25.1m Energy Events Centre due to open February 2007.

With an expected 450 international travel agents coming

to view what New Zealand has to offer as well as a similar number of exhibitors, TRENZ 2007 will position Rotorua in the international, and national, spotlight.

These important agents will be exposed to our landscapes, our people, our culture, our products, and the depth of experiences Rotorua has to offer; an experience we call Manaakitanga (a deep-rooted concept in Maori culture implying guardianship over our land, treasures, people and visitors).

ROT@RUA
feel the spirit
Manaakitanga

spirit of a living culture

“Toi te kupu, toi te mana, toi te whenua”

The permanence of the language, of prestige, and land



spirit of the earth

“Toitu he kainga, whatu ngarongaro he tangata”

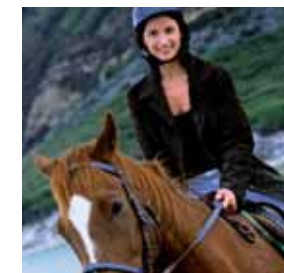
Only the land remains, when the people have disappeared



challenge your spirit

“Werohia te wero”

Take up the challenge



rejuvenate your spirit

“E tutaki ana nga kapua o te rangi, kei runga te Mangoroa e kopae pu ana”

The clouds in the sky close over, but above them spreads the Milky Way



free your spirit

“He pai rangi tahi”

The beauty of a single day



itineraries

The Thermal Explorer Highway takes you through the centre of the Central North Island, passing through the regions of the Waikato, Rotorua, Lake Taupo and Ruapehu. These regions are abundant with crystal clear lakes and streams, natural spas, ski fields, geothermal activity, Maori culture and underground cave mysteries.

THERMAL EXPLORER HIGHWAY

The itinerary below can be used as a guide for self drive clients travelling to and beyond Rotorua.

DAY ONE

On arrival in Auckland, head down the Thermal Explorer Highway towards Rotorua. If time permits, make a short detour to Matamata to visit the Hobbiton movie set, where two of the Lord of the Rings movie trilogy was set. Continue on to Rotorua. Set amidst a myriad of crystal clear lakes, Rotorua is the spiritual home of Te Arawa Maori. It is here you will experience nature's awesome earth forces – bubbling mud pools, spouting geysers and natural geothermal mineral pools. Tonight take in a traditional maori performance. Overnight Rotorua.

DAY TWO

With 16 lakes, Rotorua is also the ideal place to do a spot of trout fishing or just enjoy the stunning lake and forest vistas. Spend today in and around Rotorua creating your own itinerary, or using the suggested activities on the next page. Overnight Rotorua.

DAY THREE

Head off down the Thermal Explorer Highway to the impressive Mt. Ruapehu, where you can explore some of the many walks in the area or take a trip on the mighty Tongariro River. Overnight Tongariro River.



DAY FOUR

Retrace your steps to Lake Taupo where there is just about every adrenalin adventure you could want on air, land and water. But if it's the sedate life you are after, then Lake Taupo is also the perfect place to take it easy, with magical hot springs to relax in and local cafes to enjoy.

Overnight Lake Taupo.

DAY FIVE

Depart Lake Taupo and head across to Te Kuiti and on up to the famous Waitomo Caves – an ancient labyrinth of limestone caves and grottos. Once you have had enough of the underground wonders, enjoy the above ground wonders of the Waikato – the centre of New Zealand's antique, farm stay and thoroughbred industries.

Overnight Waikato.

DAY SIX

This morning, further opportunity to enjoy the Waikato's wealth of activities and stunning scenery before heading up the Thermal Explorer Highway to Auckland International Airport.

ROTORUA FULL DAY OPTIONS

SUIT GROUP, INDEPENDENT TRAVELLER OR FAMILY.

NATURE AND GEOTHERMAL

9AM Depart city centre accommodation for Wai-O-Tapu Thermal Wonderland. Driving times may vary dependant on accommodation base.

9.30AM Arrive at Wai-O-Tapu. See the Champagne Pool, and Lady Knox Geyser erupt to heights of up to 20m at 10.15am.

11AM Depart Wai-O-Tapu Thermal Wonderland for Waimangu Volcanic Valley.

11.15AM Arrive at Waimangu Volcanic Valley, a unique hydrothermal system. You may wish to purchase a picnic

lunch from the café to take with you on the valley walk. Allow one to two hours for the valley walk or three hours if you are going to do the boat cruise on Lake Rotomahana.

1.15PM Depart Waimangu Volcanic Valley for Rainbow Springs and Kiwi Encounter.

2.15PM Arrive at Rainbow Springs and Kiwi Encounter. Marvel at the silent grace of the magnificent specimens of rainbow, brown, brook and tiger trout swimming in the fern-fringed crystal-clear springs at Rainbow Springs.

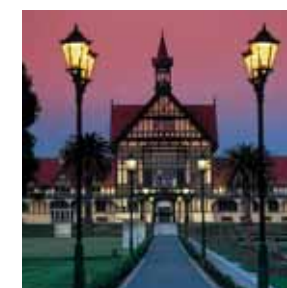
Kiwi Encounter is a working hatchery and nursery. Kiwi birds are hatched and nurtured here. When mature enough they are released back into the wild to the areas they come from. Allow one hour for each experience.

4.15PM Depart Kiwi Encounter for the Redwood Forest.

4.45PM Arrive at the Redwood Forest Visitor Centre. Take a short 30-minute stroll through the magnificent Californian Redwoods. The well-signposted track is easy, flat walking. Allow minimum of 30 minutes.



CULTURE AND HERITAGE



9AM Make your way to the Rotorua Museum of Art and History. We invite you to discover the essence of Rotorua; its people, culture and volcanic landscape.

10.30AM Depart Rotorua Museum for Whakarewarewa Thermal Village.

10.45AM Arrive at Whakarewarewa Thermal Village. Whakarewarewa is a living, breathing Maori thermal village. Shops, restaurants/cafes, homes, a graveyard and a kindergarten are surrounded by boiling mud pools and a geothermal landscape with a variety of activity.

1PM Depart Whakarewarewa for the Buried Village.

1.25PM Arrive at the Buried Village. Nobody would have believed on the morning of June 10, 1886, that the serenity enjoyed by the inhabitants of Te Wairoa would be shattered by an outpouring of the earth's fury that night. Allow one and a half hours.

3PM Depart the Buried Village for your accommodation. Free time.

4.45 - 6.45PM You will be collected from your accommodation to experience

an evening with Tamaki Tours. The Tamaki Experience begins with a journey back in time. Your driver/guide will lead you back to pre-European times with stories, history and Maori protocol in preparation for the ceremony to follow as you travel by coach to this village set deep in a forest, 15 minutes south of Rotorua. Here you will be welcomed, enjoy an award-winning cultural performance and partake in the traditional hangi meal. At the end of the evening your driver will return you to your accommodation.

ROTORUA THREE DAY ITINERARY

SUIT GROUP, INDEPENDENT TRAVELLER OR FAMILY.

A TASTE OF ROTORUA

Stay longer in Rotorua – what the research tells us your clients want.

Destination Rotorua Tourism Marketing undertakes a series of visitor surveys four times a year, now in the third year of

collecting this data, some real trends are presenting themselves. One key area is visitor satisfaction in relation to their length of stay in Rotorua.

Traditionally Rotorua has been known as

a one or two night stay...however visitor feedback shows that had they known more about Rotorua prior to their arrival, they would have stayed longer as there is so much to do!



DAY ONE

9AM Depart from your accommodation and make your way to the Agrodome.

9.20AM Arrive at the Agrodome for the 9.30am farm show. This is a unique one hour experience where you will see 19 different breeds of sheep; see a working farm dog in action. There is audience participation including the option to feed lambs and milk a cow. After the farm show, take a trip on the organic farm tour.

11.30AM Depart from the Agrodome for Skyline Skyrides.

11.45AM Arrive at Skyline Skyrides. Set high on the side of Mt Ngongotaha with extensive views of Rotorua city, lake, geothermal activity and surrounding hinterlands - Skyline Skyrides provides the ideal venue for a day of family fun; they have a lovely restaurant which is an ideal spot for lunch. The Luge is a fun ride for all

ages. A world 'first' proudly designed and built in Rotorua, the Luge is a fun filled gravity ride on a 3 wheel cart. The unique braking and steering system provides the rider full control and allows them to travel as fast or slow as they wish. Three separate concrete sealed tracks wind down through the redwood trees. A scenic track with viewing bays at great locations for taking photographs allows a leisurely trip down whilst enjoying the panorama.

Fun for all ages with children less than 6 years of age being able to be carried in tandem. Riders return to the top of the luge on a specially designed chairlift.

2.15PM Depart from Skyline Skyrides for Paradise Valley Springs.

2.30PM Arrive at Paradise Valley Springs. Paradise Valley Springs' open style park is well known throughout New Zealand for its trout and wildlife. Their wild animals and native birds are close at hand throughout your walk and a natural

wetland with walkways across the water allows excellent viewing of New Zealand's waterbirds. In their spawning stream, you may hand feed wild rainbow and brown trout. Hundreds more swim in numerous fresh water springs, one of which has an underwater viewer while another holds large wild eels. At 2.30pm daily the lion pride is fed.

3.15PM Depart from Paradise Valley Springs for Rotorua town centre.

3.30PM Finish the day off with a visit to the town centre to explore the Government Gardens, Kuirau Park and maybe do a spot of shopping. Evening: After dining at one of the many restaurants in The StrEAT. (approx 20 restaurants and cafes to choose from on Tutanekai Street), the perfect way to finish the day is to partake in a relaxing soak at one of the Spa complexes (also a nice way to spend the day) Polynesian Spa, QE Spa, Hells Gate and Wai Ora Spa.

DAY TWO

9AM Depart city centre accommodation for Wai-O-Tapu Thermal Wonderland. (Driving times may vary dependant on accommodation base, but allow about 30 minutes).

9.30AM Arrive at Wai-O-Tapu Thermal Wonderland. Renowned for being New Zealand's most colourful geothermal reserve the well manicured walkways take visitors through a huge range of unique geothermal activity such as volcanic craters, boiling mud fields, cascading limestone terraces and the Champagne pool. The Lady Knox Geyser erupts daily at 10.15am.

11AM Depart Wai-O-Tapu Thermal Wonderland for Waimangu Volcanic Valley.

11.15AM Arrive at Waimangu Volcanic Valley. You may like to purchase a picnic lunch from the café to take with you on the valley walk. Waimangu was born in the eruption of Mt. Tarawera in 1886, creating a volcanic valley full of wonders. See Frying Pan Lake – the world's largest hot stream; steaming cliffs, unique plant life and take a cruise on Lake Rotomahana.

1.15PM Depart Waimangu Volcanic Valley for Rainbow Springs and Kiwi Encounter.

2.15PM Arrive at Rainbow Springs and Kiwi Encounter. Rainbow Springs - marvel at the silent grace of the magnificent specimens of rainbow, brown and tiger trout, swimming in the fern-fringed pools. Kiwi Encounter is a working hatchery and nursery. Kiwi are hatched and nurtured here, and when mature enough they are released back into the wild to the areas they come from.

4.15PM Depart Kiwi Encounter to your accommodation.

EVENING Choose from one of the Maori cultural experiences such as: Tamaki, Mitai Maori Village, Mai Ora or Rotoiti Tours.

DAY THREE

9AM You will be collected this morning by Raftabout for your white water rafting adventure on the Kaituna River. The Kaituna (grade 5) boasts the highest commercially rafted waterfall in the world at 7 metres. In fact, there are 3 waterfalls among the 14 rapids, two smaller waterfalls to practice on before attacking the 7 meter drop named Tutea Falls. The Kaituna River was the site of the first Hydro Electrical Power Station to supply a township with power in NZ.

12PM Raftabout will deliver you back to your accommodation.

For lunch today you may like to try out the Pig & Whistle, a bar with atmosphere, historical charm and style. Sit in the all year round garden bar and enjoy a great New Zealand pub style meal.

1PM Depart for the Waipa Mill carpark to meet Planet Bike, who will take you out in the famous Whakarewarewa Forest to try your hand at mountain biking. They will tailor make the trip to suit your level of fitness, right from beginners to advanced.

3PM Depart Waipa Mill carpark for Mountain Action.

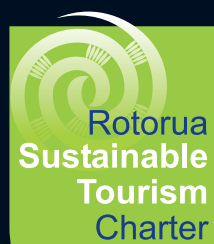
3.20PM Arrive at Mountain Action. Here you can choose from a leisurely horse trek or a fun filled 4x4 quad bike adventure. All rides are tailored for the beginner through to the advanced.

5PM Depart Mountain Action for Nzone (during daylight saving hours, operation times may vary)

5.15PM Nzone – the ultimate jump. Experience the thrill of tandem skydiving over the beautiful lakes district of Rotorua from 9500 ft, 12000ft or 15000ft.

6.30PM During daylight saving hours (October to March) you can even try out night lugging at Skyline Skyrides or night Zorbing.





Rotorua Sustainable Tourism Charter

The Rotorua Sustainable Tourism Charter is a group of tourism operators committed to continual improvement in these areas:

- Supporting our community
- Acknowledging our community's multi-cultural values
- Protecting and enhancing our natural environment
- Efficient use of all available resources
- Statutory compliance
- A safe, enjoyable and informative experience for visitors



Charter member businesses are required to undergo a sustainability assessment and annual review process. Member businesses must commit annually to new actions that improve their sustainability performance.

Play your part

A sustainable visitor destination exists not only on the actions of the host community, but also on the actions of its visitors.

Visit Charter member businesses
look for the Charter logo in this publication or visit
www.sustainableNZ.com



www.sustainableNZ.com



accommodation

PRICE GUIDE

⊗	under \$50
⊗⊗	\$50 to \$99
⊗⊗⊗	\$100 to \$249
⊗⊗⊗⊗	\$250 to \$499
⊗⊗⊗⊗⊗	over \$500



ACCOLADES BOUTIQUE HOTEL...PURE INDULGENCE

Accolades luxury boutique hotel has been built in one of Rotorua's premier locations with panoramic views across Lake Rotorua. Big in scale, yet intimate in character, the hotel has been completed to a level of comfort that exceeds expectations and exudes a warmth and atmosphere where guests can unwind in this perfect setting, relax in the sauna, enjoy a game of billiards or croquet or simply relax on the expansive decks with a good book. Other facilities include library, home theatre, guest office and helipad. Set in extensive grounds this boutique hotel will appeal to fishermen, trampers, mountain bikers and golfers with many other sightseeing activities and excellent shopping. The property is semi-rural with horses and cattle grazing nearby. Guests can be assured that presentation and hosting of this beautiful new boutique hotel will be at the top level as the hotel is owned by Michael Kelly and Rae McGill who have a reputation of providing only the very best in tourism services.

LOCATION 31 Flemington Place, Rotorua

PHONE +64 7 345 5033

FAX +64 7 345 5066

EMAIL stay@accolades.co.nz

WEBSITE www.accolades.co.nz

ACCOMMODATION TYPE Lodge NUMBER OF ROOMS 8



ACCOLADES
BOUTIQUE HOTEL

THE LODGE AT 199...SHEER SPLENDOUR

Wind your way down through a New Zealand forest canopy of native flora and arrive at the luxurious Lodge at 199. Lodge at 199 have spared no expense to satisfy your senses. Beyond the glass, Lake Tarawera sparkles effervescently, and overlooks the native bush clad hills, and as far as the eye can see. Daydream in the plush furnishings or curl up with a novel beside the fire. Warmth envelopes you in the sanctuary of the study where you may catch up on your mail or watch the news, the big game or a movie/DVD on the wide screen TV. Relax on the sofa in the snug or use the guest office. Your luxury suite awaits you....luxurious fabrics and furnishings from the four corners of the earth - only the best will do. The welcome is 100% Pure New Zealand too! Guests at 199 are overwhelmed by the hospitality and personal attention they deservedly receive.

LOCATION 199 Spencer Road, Lake Tarawera, Rotorua

PHONE +64 7 362 8122

FAX +64 7 362 8255

EMAIL lodge@199.co.nz

WEBSITE www.199.co.nz

ACCOMMODATION TYPE Lodge NUMBER OF ROOMS 3



Welcome to Park Heritage Rotorua overlooking the renowned Whakarewarewa Thermal Reserve and historical village, which makes it the perfect base to experience the natural and cultural excitement of this very unique location.

The Park Heritage Rotorua has 203 well-appointed, air conditioned rooms from standard through to suite style accommodation. The newly refurbished Chapman's Restaurant and Bar offers a contemporary New Zealand a la carte menu or a delicious buffet, matched with a fine wine selection. Enjoy the outdoor heated swimming pool, two spa pools, new fitness centre, 24-hour room service and complimentary car parking.

The Pohutu Cultural Theatre provides a showcase of Maori songs, dances and legends followed by a Maori celebration feast, prepared the traditional way, steam cooked in a hangi pit of heated stones and aromatic herbs.

Park Heritage Rotorua is the ideal venue for your next conference with meeting rooms for up to 500 guests and technical equipment to make your next conference a huge success.

We pride ourselves on our warm hospitality, professional staff, and high standards.

LOCATION Corner Froude and Tryon Streets, Rotorua

NZ FREEPHONE 0800 108 114

FAX +64 7 347 1620

EMAIL info@parkheritagerotorua.co.nz

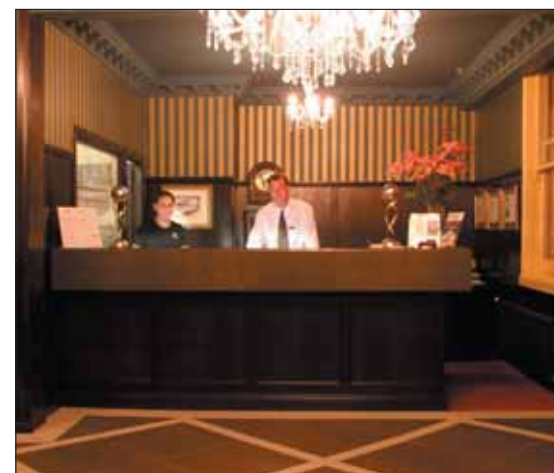
WEBSITE www.heritagehotels.co.nz

ACCOMMODATION TYPE Hotel NUMBER OF ROOMS 203



PRINCES GATE HOTEL

PRICE GUIDE
from



PRINCES GATE HOTEL

Welcome to the world of charm, elegance and hospitality. The Princes Gate Hotel is a very unique property built in 1897, centrally located overlooking the world famous Government Gardens. The Princes Gate Hotel combines luxury, location and style with genuine personality and service. Whether it be opera, live theatre or relaxing in the thermal pools, The Princes Gate Hotel is the ideal venue.

The Princes Gate Hotel is privately owned and operated. 109 years old, it is the only character property of its kind in Rotorua.

FACILITIES

- 50 beautifully appointed rooms, with private facilities
- Tea/coffee making facilities, mini bar, television, radio and telephone
- 2 conference rooms
- Bar
- Restaurant 1920's elegance with grand piano
- 3 thermal pools
- Sauna
- Private pool

Owned and operated by New Zealanders.

ACCOMMODATION TYPE Hotel NUMBER OF ROOMS 50



MAYFAIR APARTMENTS

Mayfair Apartments offers accommodation at the highest level, superbly decorated with kitchen and laundry facilities.

A choice of four fully self-contained 2 bed apartments, serviced daily, with a spa pool in each unit, security system, lockable garage, and a small outdoor living area, these apartments offer the ultimate in accommodation with a truly superb location.

ADDRESS 1057 Arawa Street, Rotorua

PHONE +64 7 348 1179

FAX +64 7 348 6215

EMAIL info@princesgate.co.nz

WEBSITE www.princesgate.co.nz

ACCOMMODATION TYPE Apartment NUMBER OF ROOMS 4

The Princes Gate Hotel
A Hotel so good they built the city around it.

THE ROYAL LAKESIDE NOVOTEL HOTEL | HOTEL IBIS ROTORUA

PRICE GUIDE
from



Situated on the picturesque shores of Lake Rotorua, **THE ROYAL LAKESIDE NOVOTEL** is Rotorua's premier international 4.5 star property.

- Stunning views of Lake Rotorua and surrounding hinterland
- 10 minutes walk to the Convention Centre and Energy Events Centre
- Adjacent to the café district and city centre
- Polynesian Spa, geothermal parks, golf, Museum, gardens and much more all in close proximity
- Central location to explore Rotorua's popular attractions

ROYAL LAKESIDE NOVOTEL FACILITIES

- 199 Accommodation rooms including 8 king suites, 2 executive suites and the prestigious Royal Suite
- All rooms feature air conditioning, in-room safes, minibar, broadband and wireless internet access
- The Royal Spa & Fitness Centre – featuring indoor heated pool, geothermal spas, saunas and fitness studio
- The Spa is open 7 days a week – proudly using the world renowned Sothys Paris skin care and body treatment range

HOTEL IBIS ROTORUA is situated adjacent to the Royal Lakeside Novotel, Hotel Ibis is Rotorua's newest 3 star international Hotel

HOTEL IBIS FACILITIES INCLUDE

- 145 Accommodation rooms with stunning views of Lake Rotorua and surrounding hinterland
- All rooms feature air conditioning, in-room safes and high-speed internet access
- I Restaurant and Bar for all day dining and refreshments
- Guest laundry and dry cleaning service
- Ample free parking

- On-site dining and entertainment with Atlas Brasserie Restaurant, Clarke's Bar and the nightly Matariki Hangi & Cultural Show
- Guest laundry and dry cleaning service
- Ample free parking
- 24 hour reception with committed, friendly staff who enjoy delivering award-winning service
- Conference facilities for up to 400 pax featuring 7 dedicated conference rooms
- Rotorua's out cater specialist

LOCATION Lake End Tutanekei Street Rotorua

PHONE +64 7 346 3888 FAX +64 7 347 1888

EMAIL h1874-re01@accor.com

WEBSITE accortrade.info

ACCOMMODATION TYPE Hotel NUMBER OF ROOMS 199



- 24 hour reception with committed, friendly staff delivering the Ibis commitment to hospitality
- Central location to explore Rotorua's popular attractions

LOCATION Lake End Rangioru Street Rotorua

PHONE +64 7 346 3999 FAX +64 7 347 1888

EMAIL h1874-re01@accor.com

WEBSITE accortrade.info

ACCOMMODATION TYPE Hotel NUMBER OF ROOMS 145



SUDIMA HOTEL LAKE ROTORUA

PRICE GUIDE
from



PROFILE

'Location, Location, Location' best describes Rotorua's largest hotel. Set on the shores of beautiful Lake Rotorua, adjacent to the famous Polynesian Spa complex and only a five-minute stroll to the dynamic city centre, is the Sudima Hotel Lake Rotorua.

ACCOMMODATION

Stay in the comfort of one of our 250 guest rooms – offering superior rooms, standard rooms or family rooms. Every room features an ensuite bathroom, wireless broadband internet, Sky Television, in-house movies, direct-dial telephone, mini-bar and complimentary teas and coffee. Many of the rooms boast beautiful views across Lake Rotorua, and 24-hour reception and room service is available.

CONFERENCES & FUNCTIONS

The Sudima Hotel Lake Rotorua presents 250 guest rooms, three conference venues accommodating up to 400 delegates – each with wireless broadband internet and state-of-the-art conference equipment, a great bar and restaurant and many more facilities and services to make your next conference or meeting a productive and positive experience.

GUEST FACILITIES

Relax and unwind in the beautifully heated, open-air swimming pool or enjoy the privacy of one of the blissful hot spa pools.

Enjoy a hearty breakfast, long lunch or a sumptuous dinner in the hotel's restaurant, relax with your favourite drink in the bar or have a delicious meal delivered to your room.

After a busy day exploring Rotorua, treat yourself to a rejuvenation massage or hot stones therapy – simply sublime.

ROTORUA – FEEL THE SPIRIT

You'll definitely want to stay more than one night to experience all that New Zealand's premier tourist destination has on offer for you! All attractions can be arranged through the hotel reception.

Just a taste of Rotorua's activities:

- Trout fishing
- Agrodome farm show
- Excellent golf courses
- Half & full day sightseeing tours
- View the dramatic volcanic crater of Mt Tarawera
- Scenic helicopter & floatplane flights
- Erupting geysers and other geothermal wonders
- Polynesian Spa thermal pools
- Forest walks
- Scenic cruises on Lake Rotorua
- Easy access to 10 recreational lakes

MAORI CULTURE CONCERT PARTY

The nightly Maori Concert is an event not to be missed. After a formal Powhiri (welcome), savour a superb feast – an array of Hangi (traditional Maori dishes) complemented by an excellent selection of eastern and western cuisine. As you dine, be entertained by Te Roopu Manaia – the high-energy, dynamic Maori Culture group.

Be thrilled by the haka, see the skilful poi dances, enjoy traditional and contemporary Maori songs and hear the rich tapestry of Maori legends in this 2-hour event.

ADDRESS 1000 Eruera Street, Rotorua

PHONE +64 7 348 1174 **FAX** +64 7 346 0238

EMAIL reservations@sudimahotels.co.nz

WEBSITE www.sudimahotels.com

ACCOMMODATION TYPE Hotel NUMBER OF ROOMS 250



SUDIMA HOTEL
LAKE ROTORUA

QUALITY HOTEL GEYSERLAND

PRICE GUIDE
from



ROOM FACILITIES Sky TV, tea and coffee making facilities, modem connection, mini bar, alarm/clock radios, direct dial telephone, two spa bath suites, ironing boards and irons, hair dryers, most rooms offer a view of the Pohutu Geyser from the balcony.

GUEST FACILITIES Heated swimming pool, spout pools, spa pool, gym, business centre, internet cafe, wireless hotspot, four conference rooms suitable for two to 200 guests.

RESTAURANT The Geyserview Restaurant and Bar overlooks the Pohutu Geyser. The restaurant has an excellent a la carte menu and also offers a range of set menus, hangi and buffets to suit your requirements. A traditional Maori hangi and concert is available most nights.

ADDRESS 424 Fenton Street, Rotorua

NZ FREEPHONE 0800 881 882

PHONE +64 7 348 2039 **FAX** +64 7 348 2033

EMAIL geyserland@silveroaks.co.nz

ACCOMMODATION TYPE Hotel NUMBER OF ROOMS 70



QUALITY RESORT HERITAGE

PRICE GUIDE
from



ROOM FACILITIES Sky TV, tea and coffee making facilities, majority of the rooms have kitchens, writing desks and modem connections, mini bar, microwaves, alarm/clock radios, direct dial telephone, some rooms have spas, ironing boards and irons, hair dryers, DVD.

GUEST FACILITIES Heated swimming pool, spa pools, gym, floodlit tennis courts, nine hole mini golf, adventure playground, gas BBQ's, gazebo, internet cafe, wireless internet, restaurant and bar, guest laundry and room service, four conference rooms suitable for two to 120 guests.

RESTAURANT The Heritage's Scotch Poacher Restaurant and Bar has an excellent a la carte menu with a world-class wine list. It also offers a range of set menus and buffets to suit your requirements, with breakfast having cooked or continental options. The separate bar and lounge area are well appointed with an open fire.

ADDRESS 349 Fenton Street, Rotorua **NZ FREEPHONE** 0800 999 393

PHONE +64 7 347 7686 **FAX** +64 7 346 3347

EMAIL heritage@silveroaks.co.nz

WEBSITE www.silveroaks.co.nz

ACCOMMODATION TYPE Motor Lodge NUMBER OF ROOMS 41



GWENDOLINE MOTOR LODGE

PRICE GUIDE
from



ROOM FACILITIES Each one bedroom room has full kitchen facilities, central heating, iron facilities, TV/DVD, Sky TV, direct dial telephone, tea/coffee making facilities, microwaves, alarm/clock radios, in addition each room has a private self-fill spa pool.

GUEST FACILITIES On site is guest laundry and wireless internet facility, room service cooked and continental breakfast. All guests have free access to the resort facilities at the Quality Resort Heritage, which is adjacent to the Motel.

RECEPTION Open 6am to 11pm.

ADDRESS Corner Fenton and Gwendoline Streets, Rotorua

NZ FREEPHONE 0800 366 112

PHONE +64 7 347 8630

FAX +64 7 346 1331

EMAIL gwendoline@silveroaks.co.nz

WEBSITE www.silveroaks.co.nz

ACCOMMODATION TYPE Motel NUMBER OF ROOMS 17



A-KAHU

PRICE GUIDE



PROFILE A luxury lake edge B&B, A-Kahu is also an intimate, real encounter with Te Arawa Maori – your hosts are a family whose links to Rotorua stretch back centuries.

Just minutes from town at Kawaha Point, this lake edge haven offers seclusion. There are four beautifully appointed guest rooms -each with striking contemporary Maori art and boasting stunning views across Lake Rotorua to Ohinemutu Village and historic Mt Tarawera. Super king size beds, fine linens and ensuite bathrooms are all standard. Family interconnected rooms are available.

Enjoy a scrumptious home cooked breakfast each morning of your stay. Dinner is available upon request as are fishing, swimming, kayaking, and waterskiing, jet skiing from the private jetty.

ADDRESS 155 Kawaha Point Road, Lake Rotorua

PHONE +64 7 347 4148

EMAIL A-Kahu@xtra.co.nz

WEBSITE www.akahu.co.nz



ACCOMMODATION TYPE Boutique NUMBER OF ROOMS 4

DUXTON HOTEL OKAWA BAY RESORT

PRICE GUIDE



PROFILE Duxton Hotel Okawa Bay is renowned for its idyllic setting and superb facilities. Situated 15 minutes from the heart of Rotorua, its scenic position on the shores of Lake Rotoiti make an excellent alternative to city centre hotels. Each of the 44 rooms and suites are stylishly appointed. Enjoy fine dining in the relaxed surroundings of The Grill Restaurant or relax at the bar and simply soak in the atmosphere. Wireless computer access in public areas and broadband in accommodation rooms.

FACILITIES Marina with boat ramp, pontoon boat, lake cruises, fishing, paddleboats, kayaks, helipad, outdoor swimming pool, floodlit tennis court, mountain bikes, and business centre. The idyllic setting allows the flexibility for a diverse range of special activities for conference, incentives and product launches.

ADDRESS 366 State Highway 33, Mourea, Rotorua

NZ FREEPHONE 0800 655 555

PHONE +64 7 362 4599 **FAX** +64 7 362 4594

EMAIL res@rotorua.duxton.co.nz

WEBSITE www.duxton.com



DUXTON HOTEL
OKAWA BAY • ROTORUA

ACCOMMODATION TYPE Hotel NUMBER OF ROOMS 44

ESSENCE OF NEW ZEALAND – PUKEKO LANDING

PRICE GUIDE



PUKEKO LANDING - LAKE TARAWERA, ROTORUA

Revitalise your spirit in the serenity of your own private haven. Pukeko Landing offers breathtaking views, abundant bird-life and a secluded lake edge lawn and jetty. This elegant cottage caters for up to six guests with two super king/twin rooms and one twin, with one en-suite/luxury spa bath overlooking the lake and one share bathroom. Single party bookings ensure guests have exclusive use of the entire property. The kitchen is equipped for self-catering and complimentary fresh breakfast provisions are provided. Chef prepared meals available by arrangement (additional charges apply) and phone/fax, wireless laptop/printer, laundry facilities and secure parking on site.

ADDRESS 6 Ronald Road, Lake Tarawera

PHONE +64 275 424 202

FAX +64 9 358 2214

EMAIL stay@essencenz.com

WEBSITE www.essencenz.com



ACCOMMODATION TYPE Lodge NUMBER OF ROOMS 3

GRAND TIARA HOTEL AND CONFERENCE CENTRE

PRICE GUIDE



PROFILE Rotorua's beautiful Grand Tiara Hotel & Conference Centre is a boutique hotel complex with a unique native garden interior – and the city's largest hotel-based conference centre with facilities to cater for up to 500 delegates. With 133 rooms from the royal suite, executive suites and deluxe rooms.

Try a variety of cuisine styles, from sumptuous seafood buffet Friday and Saturday nights or a la carte each evening, to Japanese Yakitori – skewers of succulent meat and vegetables basted with traditional Yakitori sauce in a casual dining bar.

Other facilities include a big swimming pool, hot spa pools including an underground grotto, sauna, gymnasium, and the relaxing McLardy's House Bar which also offers bar food.

ADDRESS Corner Fenton and Sala Streets, Rotorua

NZ FREEPHONE 0800 654 789

PHONE +64 7 349 5200 **FAX** +64 7 349 5201

EMAIL reservations@grandtiara.co.nz

WEBSITE www.grandtiara.co.nz



ACCOMMODATION TYPE Hotel NUMBER OF ROOMS 133

KAWAHA POINT LODGE

PRICE GUIDE



EXPERIENCE THE MAGIC OF KAWAHA POINT LODGE

With award winning New Zealand owner/hosts.

The Lodge is on the edge of Lake Rotorua in 1 acre of mature gardens 5 minutes from the city and 15 minutes to the Rotorua Airport. 3 hours drive from Auckland.

The Lodge offers 8 luxuriously appointed rooms. The finest NZ produce and wines are served.

Activities within 10 minutes of the lodge; trout fishing, golf, Maori culture, Thermal, bush walks. Experience luxury surroundings, antique furniture, personal service, tranquility and privacy.



ADDRESS 171 Kawaha Point Road, Rotorua

PHONE +64 7 346 3602

FAX +64 7 346 3671

EMAIL enquire@kawahalodge.co.nz

WEBSITE www.kawahalodge.co.nz

KINGSGATE HOTEL ROTORUA

PRICE GUIDE



FACILITIES The Kingsgate Hotel Rotorua has recently been refurbished to reflect Rotorua's pride in providing warm, welcoming hospitality in a natural setting.

Kingsgate Hotel Rotorua is a mid-range hotel with extensive leisure and conference facilities. Accommodation options include suites, interconnecting, triple share and superior rooms including air conditioning and broadband access. Guests can enjoy the heated pool, spas, sauna, tennis court, work out in the gym after a busy day or just relax in the bar before dinner in either the Tickled Trout Restaurant or Maori Concert and Banquet.

LOCATION Centrally located on Fenton Street between the CBD and Whakarewarewa.

ADDRESS Fenton Street, Rotorua

NZ FREEPHONE 0508 747 686

PHONE +64 7 348 0199

FAX +64 7 346 1973

WEBSITE www.kingsgaterotorua.co.nz



ACCOMMODATION TYPE Hotel NUMBER OF ROOMS 136

KOURA LODGE

PRICE GUIDE
⊗⊗⊗⊗



FACILITIES A genuine lawn to lake-edge, luxury retreat situated on the tip of Kawaha Point, only five minutes drive to the City centre. Koura Lodge offers 10 rooms with a variety of double accommodation, as well as a family suite and two bedroom penthouse apartment, all with private ensuite bathrooms and fabulous views of Lake Rotorua and Mt Tarawera.

A luxuriously furnished lodge with a relaxed B&B atmosphere, serving an extensive buffet breakfast in the lake-side dining room.

On site facilities include: comfortable lounge with wood fire and Sky television, open-air spa pool/sauna, massage, championship Astro-turf tennis court, canoes, heli-pad and float-plane/fishing excursions departing from private jetty. Koura Lodge is only minutes from three well known 18-hole golf courses, mountain bike trails and dozens of restaurants.

ADDRESS 209 Kawaha Point Road, Rotorua

PHONE +64 7 348 5868 **FAX** +64 7 348 5869

EMAIL stay@kouralodge.co.nz

WEBSITE www.kouralodge.co.nz



ACCOMMODATION TYPE Lodge NUMBER OF ROOMS 10

MILLENNIUM HOTEL ROTORUA

PRICE GUIDE
⊗⊗⊗⊗



PROFILE Rotorua's largest 4 star deluxe hotel is perfectly situated in the heart of the city, by the lake front, and adjacent to the famous Polynesian Spa. Five levels of recently refurbished accommodation offer guests a wide variety of scenic views over Lake Rotorua to the serene beauty of the Hotel's own native forest courtyard.

With Bar Zazu, Restaurant Nikau, a heated swimming pool, Day Spa with sauna and gymnasium complementing the Hotel. In-house massages and beauty therapies available at The Spa—an extraordinary spa experience... naturally.

Millennium Hotel Rotorua, globally distinctive, individually unique.

ADDRESS Corner Eruera & Hinemaru Streets, Rotorua

NZ FREEPHONE 0800 654 685

PHONE +64 7 347 1234 **FAX** +64 7 348 1234

EMAIL millennium.rotorua@millenniumhotels.co.nz

WEBSITE www.millenniumrotorua.co.nz



ACCOMMODATION TYPE Hotel NUMBER OF ROOMS 227

OKAREKA LAKE HOUSE

PRICE GUIDE
\$\$\$\$



FACILITIES Only 10–15 minutes scenic drive from Rotorua CBD. Absolute lake-edge. Security gates. Private estate on own peninsula almost completely surrounded by water. Lake stocked with rainbow trout. Private jetty. Helicopter pad. Exterior hot tub. Private beach. Barbeque. Kayaks and fishing gear supplied. Jet-ski. Entertainment theatre. Library. Computers with broadband internet and printers. Two lounges. Two interior dining areas, various exterior dining options. Private wine cellar. Flexible staffing options available, including butler and nanny service. All suites have commanding views of Lake Okareka and the surrounding countryside.

PLEASE NOTE The resort can accommodate up to 10 guests, however it is an "exclusive" luxury resort and will accept just one booking per night – be it two or 10 persons.

ADDRESS Acacia Road, Lake Okareka, Rotorua

PHONE +64 7 349 8123 **FAX** +64 7 348 4990

EMAIL enquiries@okareka.co.nz

WEBSITE www.okareka.co.nz



ACCOMMODATION TYPE Exclusive NUMBER OF SUITES 5

PEPPERS ON THE POINT

PRICE GUIDE
⊗⊗⊗⊗



PROFILE Surrounded by the sparkling waters of Lake Rotorua, Peppers On the Point offers guests the opportunity to experience the rich culture and geothermal wonders of Rotorua or simply relax and enjoy the tranquillity of the stunning location.

Steeped in the traditions and heritage of a fine gracious home surrounded by antiques and quality furnishings. Quintessential service that provides the best without intruding on your pleasure and relaxation. The resident chef prepares meals on a daily basis accompanied by internationally acclaimed New Zealand wine.

Seven luxuriously appointed suites within the lodge, two lake cottage suites and the 'Lake Villa' a four bedroom home.

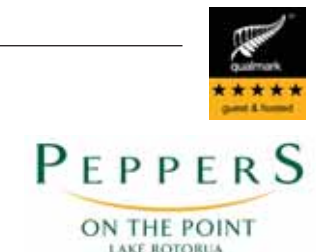
ADDRESS 214 Kawaha Point Road, Rotorua

PHONE +64 7 348 4868

FAX +64 7 348 1868

EMAIL onthepoint@peppers.co.nz

WEBSITE www.peppers.co.nz/onthepoint



ACCOMMODATION TYPE Lodge NUMBER OF ROOMS 9

RYDGES ROTORUA

PRICE GUIDE
⊗⊗⊗



PROFILE Rydges Rotorua offers guests this city's most spacious and luxurious accommodation. Located in a park-like setting on the edge of Rotorua's Racecourse within an easy walking distance to shopping and local attractions that Rotorua is famous for. You need not go further for dining than our award-winning Atrium Restaurant, which features modern and classic cuisine with the highlight being our live cooking experience on a Friday and Saturday night. Or before dinner, why not relax in our Mezz Bar with a drink overlooking the Atrium. Facilities include indoor thermally-heated swimming pool, gymnasium, 24-hr reception and comprehensive conference facilities.

ADDRESS 272 Fenton Street, Rotorua

PHONE +64 7 349 0099

FAX +64 7 349 0900

EMAIL rydges_rotorua@rydges.com

WEBSITE www.rydges.com/rotorua



ACCOMMODATION TYPE Hotel NUMBER OF ROOMS 135

SOLITAIRE LODGE

PRICE GUIDE
⊗⊗⊗⊗



PROFILE Solitaire Lodge is a magical experience combining luxury and indulgence. Situated on its own private peninsula overlooking Lake Tarawera.

Recently refurbished, the 10 elegant guest suites are spacious, beautifully presented and superbly sited to take in the views through floor to ceiling windows. Solitaire Lodge enjoys a reputation for exquisite New Zealand cuisine. An extensive wine cellar showcases some of New Zealand's finest wines which accompany meals.

A myriad of activities are available including helicopter safaris, thermal bathing or fishing aboard one of the Lodge's three magnificent charter vessels.

ADDRESS Ronald Road, Lake Tarawera, Rotorua

NZ FREEPHONE 0800 765 482

PHONE +64 7 362 8208

FAX +64 7 362 8445

EMAIL solitaire@solitairelodge.co.nz

WEBSITE www.solitairelodge.com



ACCOMMODATION TYPE Lodge NUMBER OF ROOMS 10

THE SPRINGS

PRICE GUIDE
⊗⊗⊗⊗

Welcome to Rotorua's only central luxury boutique accommodation. This delightful Bed and Breakfast was purpose built and won an architectural award along with an international reputation for exceptional hospitality and value. The guest wing houses four elegant, ensuite rooms with doors leading to a private retreat overlooking the rose gardens.

Guest amenities include: • Off street parking • Refreshments on arrival • Luxurious guest lounge • Concierge service • Gourmet breakfast • Laundry service \$30.00 • In room safes • Satellite television • Ceiling fans • Walk in closets • Sightseeing operators and travel coaches pick up & drop off

ADDRESS 16 Devon Street (Off Fenton Street), Rotorua
PHONE +64 7 348 9922
FAX +64 7 348 9964
EMAIL stay@thesprings.co.nz
WEBSITE www.thesprings.co.nz

THE
Springs

TREETOPS LODGE & ESTATE

PRICE GUIDE
⊗⊗⊗⊗⊗

PROFILE Few places in the world truly embody the spirit of adventure more than the fabulous, award-winning Treetops Lodge & Estate. Set in over 2,500 acres of private wilderness in New Zealand's famed thermal region, Treetops is a carefully managed game and wildlife habitat for fly fishermen, sporting enthusiasts and their pampered guests. The lodge comprises four suites and eight private, ultra-luxurious villas which are located in the extensive grounds. Each of the suites has its own unique character, individual style, design and exquisite furnishings, and offers privacy and seclusion framed by native virgin forest with views over lakes and wildlife. The property is located 13kms from the city of Rotorua and 25kms from Rotorua airport.

ADDRESS 351 Kearoa Road, RD1, Horohoro, Rotorua
PHONE +64 7 333 2066
FAX +64 7 333 2065
EMAIL info@treetops.co.nz
WEBSITE www.treetops.co.nz



ACCOMMODATION TYPE Lodge NUMBER OF ROOMS 12

VENTURA INN & SUITES ROTORUA

PRICE GUIDE
⊗⊗⊗⊗

FACILITIES Ventura Inn & Suites is just south of the central business district with Rotorua's best restaurants, attractions and shopping within easy walking distance. Guests have a choice of studio rooms, or suites featuring kitchen facilities and separate bedroom. Rooms with king beds and spa baths are also available. Rooms are air-conditioned with internal lift access and keycard security locks. Rates include a complimentary continental buffet breakfast. Hotel facilities include 24-hour reception, fitness room, heated swimming pool & spa, internet kiosk, guest laundry and a 60-seat conference room.

ADDRESS Corner Fenton and Victoria Streets, Rotorua
PHONE +64 7 350 2211
FAX +64 7 350 2212
EMAIL rotorua@venturainns.co.nz
WEBSITE www.venturainns.co.nz



ACCOMMODATION TYPE Hotel NUMBER OF ROOMS 54

additional accommodation listing

COMPANY	DESCRIPTION	CONTACT
ACCOMMODATION - HOLIDAY PARK		
ROTORUA FAMILY HOLIDAY PARK	Quiet, close to major tourist attractions, local shops, cafes and fishing streams. Qualmark 3-star graded.	www.rotoruafamilypark.co.nz
ROTORUA THERMAL HOLIDAY PARK	Tourist flats, log cabins, campervan, caravan, tent sites. 100 bed lodge. On-site licensed café.	www.rotoruatthermal.co.nz
ROTORUA TOP 10 HOLIDAY PARK	A variety of modern accommodation and cobblestoned campervan sites in central city location.	www.rotoruatop10.co.nz
WAITETI TROUT STREAM HOLIDAY PARK	Unique streamside setting. Fishing on your doorstep. Five minutes from attractions.	www.waiteti.com
ACCOMMODATION - HOMESTAY/FARMSTAY		
AT THE LAKE HOUSE	B&B on Lake Rotorua. Qualmark 4-star plus graded.	www.thelakehouse.co.nz
BAYADERE LODGE	Modern and spacious B&B with lake and rural views. 3 large ensuite rooms. Full breakfasts. Qualmark 4-star.	www.bayaderelodge.com
BLARNEY LODGE	Hosted accommodation and guiding services for discerning guests and anglers.	www.blarneylodge.co.nz
BROEKHAVEN COUNTRY COTTAGE	Private, spacious self contained country house. Sleeps five. Friendly farm animals to feed.	www.broekhaven.co.nz
COLSON COUNTRY LODGE	Comfortable country retreat. Free shuttle to and from city. Dinner by arrangement.	www.taylorstours.co.nz
EAST WEST BOUTIQUE B&B & APTS	Geothermally heated boutique B&B and self catering apartments located in the heart of Rotorua city.	www.eastwesthomestay.co.nz
EATON HALL	B&B accommodation close to Polynesian Spa, Government Gardens and shops.	www.eatonhallbnb.co.nz
HUKITAWA COUNTRY RETREAT	Superb farmstay surrounded by farmland and magnificent Whirinaki forest. Three ensuite rooms.	www.hukitawa.co.nz
ILES COTTAGE	We offer a very private, quality B&B style accommodation.	www.cottage.avisit.co.nz
LAKE EDGE ACCOMMODATION	Self contained accommodation on the lake edge. Sleeps four to six, 15 minutes from city centre.	www.nzhomestay.co.nz/kingi.htm
LAKE OKAREKA B&B	Self contained studio unit with queen bed. Double room with private ensuite. One single room.	www.lakeokarekabnb.co.nz
PEPPERTREE FARM	B&B farmstay in lovely rural country with lake views and near to the airport.	+64 7 345 3718
REDCREST FARM	Luxurious fully self-catering three bedroom cottage with magnificent views and only 17km to city centre.	www.redcrest.co.nz
WAITETI LAKESIDE LODGE	Luxury private accommodation on the shores of Lake Rotorua.	www.waitetilodge.co.nz
WALKER HOMESTAY AND B&B	Self-contained two bedroom unit or double room in hosts home. Member of Maori In Tourism Rotorua.	www.bnb.co.nz/walkerhomestay.html
WESTMINSTER LODGE	Quality B&B Qualmark 3-star plus graded. Self contained cottage Qualmark 4-star graded.	www.westminsterlodge.co.nz
ACCOMMODATION - HOSTEL/BACKPACKERS		
CACTUS JACK'S	Rotorua's only themed backpackers. Central location. Courtyard with BBQ. Thermal pool.	www.cactusjackbackpackers.co.nz
CRASH PALACE	Cosy central hostel, fully equipped for all sightseeing requirements.	www.crashpalace.co.nz
MICROTEL ROTORUA	Compact luxury, centrally located. Backpacker plus studio, family accommodation. Spa and sauna on site.	www.micotel.co.nz
TREKS ROTORUA BACKPACKERS	Modern, upmarket hostel, central city location with off-street parking. Share and private rooms available.	www.treks.co.nz
ACCOMMODATION - LODGE		
LAKE TARAWERA LODGE	Qualmark 4-star rated. Private two bedroom deluxe cottages with lake and mountain views. Peaceful.	www.laketarawera.co.nz
NGONGOTAHA LAKESIDE LODGE	Lakeside accommodation. Stunning views, great food, warm & relaxed. Fly fishing and bird watching.	www.rotorualakesidelodge.co.nz
THE RIVER LODGE	The River Lodge is a specialist corporate retreat offering a unique conference experience.	www.riverlodge.co.nz
AMBASSADOR THERMAL MOTEL	Clean, comfortable motel. Central location. Large units sleep 1-7. Mineral pools, spa & swimming pool.	www.ambassrotorua.co.nz
ACCOMMODATION - MOTEL		
ANN'S VOLCANIC ROTORUA MOTEL AND SERVICED APARTMENTS	World Famous Ann's Volcanic! 1 & 2 bedroom units with private garden spa pools. Free laundry. Tours booked by Ann.	www.rotoruumotel.co.nz
ASCOT ON FENTON	A superior 4-star, 20 unit motel/apartment complex. All units thermally heated and complete with spa pools/baths.	www.ascotonfenton.co.nz
ASHLEIGH COURT MOTEL	Quality self contained units, private spas. Handy to city, restaurants and tourist activities.	www.ashleighcourtrorua.co.nz
BEST WESTERN FENTON COURT MOTEL	Two Bedroom, one bedroom and studio units. Spa pool or double spa bath in every unit.	www.fentoncourt.co.nz
BIRCHWOOD SPA MOTEL	17 modern studios, one and two bedroom units. Spa pools/baths, secure garaging. Wireless Broadband.	www.birchwoodspamotel.co.nz
CLEVELAND MOTEL	Warm, friendly motel. 30 self catering centrally heated units set in 3 acres of spacious grounds.	www.clevelandmotel.co.nz
JACK & DI'S WAITETI LAKEFRONT RESORT MOTEL	Family friendly, self contained accommodation with lake view units and only ten minutes drive to the city.	www.jackanddis.co.nz
NEW CASTLE MOTOR LODGE	Accommodation and small conference facility.	www.newcastle.co.nz
TUSCANY VILLAS MOTOR INN	24 luxury suites with spa pools, four with in-room spas. Conference facilities, Sky TV, broadband.	www.tuscanyvillasrotorua.co.nz
VICTORIA LODGE	Quiet, comfortable studios/apartments. Private, hot pools. Close to CBD, cafes, shops. Friendly hosts.	www.victorialodge.co.nz
ACCOMMODATION - SERVICED		
JACK & DI'S LAKE ROAD LODGE	Book a guest room or the whole lodge. Lake view accommodation and only 300 metres to the city centre.	0800 522 526 (NZ Freephone)
JACK & DI'S THE CITY PENTHOUSE	An elegant, upper level, lake view apartment and only 300 metres to the city centre.	www.jackanddis.co.nz
JACK & DI'S TROUTBECK LODGE	Book a guest room or the whole lodge. Lake view accommodation and only 10 minutes drive to the city.	0800 522 526 (NZ Freephone)

maori performance

MARAE/VILLAGE SETTING

MAI ORA Experience Mai Ora with all of your senses – sight, sound, taste, smell and touch

Te Puia, Hemo Road, Rotorua

PH +64 7 348 9047

EMAIL reservations@tepuia.com

WEB www.tepuia.com

MIN PAX From five by arrangement

MAX PAX 80

START TIME Summer - 6.15pm,
Winter - 5.15pm

MITAI Experience ancient Maori customs and traditions, learn Maori ritual, beliefs and protocol

196 Fairy Springs Road, Rotorua

PH +64 7 343 9132

EMAIL wetini@mitai.co.nz

WEB www.mitai.co.nz

MIN PAX 10 MAX PAX 200

START TIME 6.30pm

ROTOITI TOURS A truly unique, authentic and traditional Maori experience on a functioning Marae

Rakeiao Marae, Lake Rotoiti

PH +64 7 348 8969

EMAIL info@worldofmaori.co.nz

WEB www.worldofmaori.co.nz

MIN PAX 20 MAX PAX 120

START TIME 6.30pm

TAMAKI Journey back in time to a pre-European village and experience customs and traditions of Maori through song, dance and spiritual stories

Head Office, Hinemaru Street, Rotorua

PH +64 7 346 2823

EMAIL bookings@maoriculture.co.nz

WEB www.maoriculture.co.nz

MIN PAX By arrangement MAX PAX 185

START TIME Summer - 5.00pm, 6.00pm,

7.00pm (depart town)

Winter - 5.00pm and/or 7.00pm (depart town)

HOTEL/THEATRE SETTING

FOUR CANOES Step into the world of Maori as we celebrate our culture and history through song, dance, games, weaponry, displays and storytelling

273 Fenton Street, Rotorua

PH +64 7 348 9184

EMAIL reservations@fourcanoes.com

WEB www.fourcanoes.com

MIN PAX 15 MAX PAX 100

START TIME 6.30pm

GRAND TIARA Experience an unforgettable evening that will excite and captivate you. Immerse yourself in our cultural traditions with songs, dance and games

Fenton Street, Rotorua

PH +64 7 349 5200

EMAIL reservations@grandtiara.co.nz

WEB www.grandtiara.co.nz

MIN PAX 35 MAX PAX 130

START TIME Dinner - 7.00pm, Show - 8.00pm

KINGSGATE Hear stories of legends of love and battles through traditional song and dance

Fenton Street, Rotorua

PH +64 7 348 0199

EMAIL central.res@mckhotels.co.nz

WEB www.kingsgatehotels.co.nz

MIN PAX 25 MAX PAX: 150

START TIME Dinner - 6.45pm, Show - 8.00pm

SUDIMA HOTEL Experience a dynamic, interactive cultural performance of song and dance

1000 Eruera Street, Rotorua

PH +64 7 348 1174

EMAIL reservations@sudimarotorua.nz

WEB www.sudimarotorua.co.nz

MIN PAX 35 MAX PAX 200

START TIME Dinner - 6.30pm, Show - 8.00pm

MATARIKI Learn the legends of the local Maori people, view the hangi pit and be entertained in the cultural centre.

Novotel Hotel, Lake End Tutanekai Street, Rotorua

PH 0508 442 644

EMAIL Rotorua@novotel.co.nz

WEB www.novotel.co.nz

MIN PAX 30 MAX PAX 130

START TIME 6.30pm

MILLENNIUM Enjoy the feast and revue poolside in a tropical setting under a glass dome with an outdoor atmosphere.

Lake End Eruera Street, Rotorua

PH +64 7 347 1234

EMAIL millennium.rotorua@mckhotels.co.nz

WEB www.millenniumrotorua.co.nz

MIN PAX 25 MAX PAX 200

START TIME Dinner - 6.30pm, Show - 8.00pm

POHUTU CULTURAL THEATRE A showcase of traditional Maori Culture, complemented by a dramatic sound and visual experience that will leave you treasured with memories forever

Park Heritage Hotel, Corner Froude and Tryon Streets, Rotorua

PH +64 7 348 1189

EMAIL booking@pohutu.co.nz

WEB www.heritagehotels.co.nz

MIN PAX 40 MAX PAX 300

START TIME 6.30pm

RYDGES With audience participation you get a real experience and insight into the song and dance of the Maori

272 Fenton Street, Rotorua

PH +64 7 349 0099

EMAIL reservation_rotorua@rydges.com

WEB www.rydges.com

MIN PAX 30 MAX PAX 100

START TIME 7.00pm



attractions and activities

PRICE GUIDE

\$	under \$25
\$	\$25 to \$49
\$	\$50 to \$99
\$	\$100 to \$199
\$	over \$200

AGRODOME – THE UNIQUE NEW ZEALAND EXPERIENCE

PRICE GUIDE
from \$



A multi-faceted attraction, catering for all world markets with a unique blend of agriculture and some of New Zealand's best adventure activities.

SHEEP SHOW An exciting and informative insight into agriculture in New Zealand. The hour long show stars a presenter, 19 breeds of sheep, a sheep-shearing and working dog demonstration, a sheep auction with audience participation, opportunity to hand-milk a cow and feed lambs on stage and the very popular dog trial with a strong eye dog.

Three shows daily: 9.30am, 11am & 2.30pm. Private shows available.

WORKING & ORGANIC FARM TOUR A hands-on hour tour of the 350 acre working farm. Tractor drawn trailers are used to transport visitors around the farm; all of the fleet have a commentary system, which is used to provide an informative commentary on the many aspects of agriculture on the farm. Visitors have a number of opportunities to walk around amongst the many farm animals and to hand feed them. The tour includes a visit to the organic orchard, which produces kiwifruit, olives, feijoas and apples. In the orchard visitors have a chance to sample kiwifruit wine and taste honey.

Departs daily: 10.40am, 12.10pm, 1.30pm & 3.40pm

NIGHT SKY EXPERIENCE Spend an hour star gazing at the southern skies including the Southern Cross from the Agrodome's observatory. This is the newest attraction and commenced late 2005.

ROTORUA BUNGY An adrenalin 43m high bungee jump over the Ngongotaha River.

SWOOP Reach speeds of 130kph plus as you swing from a 40m high tower.

AGROJET New Zealand's fastest jet boating, experience on a purpose built course.

FREEFALL XTREME The Southern Hemisphere's only freefall skydive simulator.

Also on-site is the Woollen Mill, Shearing Shed Museum (also used for private shearing demonstrations), Chocolate Factory, Restaurant, Dog & Whistle Gift & Souvenir Shop.

Open daily from 8.30am until 5pm. Adventure activities closed Christmas day.

Multi-lingual commentaries available for the sheep show and farm tour.

All weather attractions.

ADDRESS Western Road, Ngongotaha, Rotorua

PHONE +64 7 357 1050

FAX +64 7 357 5307

EMAIL reservations@agrodome.co.nz

WEBSITE www.agrodome.co.nz



BURIED VILLAGE

PRICE GUIDE
\$ \$ \$



DISCOVER HISTORY ALIVE TODAY...

Violent and unexpected, the volcanic eruption of Mt Tarawera was New Zealand's greatest natural disaster. It destroyed the eighth wonder of the world – the magnificent Pink and White Terraces. For more than four terrifying hours rock, ash and mud bombarded the peaceful village of Te Wairoa. Now nearly 120 years on, the excavated village offers a first-hand insight into the devastation, chaos and mayhem that transpired on the night Mt Tarawera erupted.

MUSEUM OF TE WAIROA Visitors can take an emotional journey through the museum which tells the fascinating story of Te Wairoa village, the voyages to the Pink and White Terraces and the eruption of Mt Tarawera.

See artifacts and remnants recovered from the village and experience a night in the Rotomahana Hotel with one of the guests at the time of the volcanic eruption.

EXCAVATED ARCHAEOLOGICAL SITES View this registered historic area, where Maori whare and settler buildings have been excavated to their original floor level.

Wander the scenic pathways that link the sites, enjoy pristine native bush, view the sensational wilderness above Te Wairoa Falls looking out over remote volcanic scenery and catch a glimpse of the wild rainbow trout that inhabit Te Wairoa stream.

Be thrilled by the hike to stand in the spray of the magnificent Te Wairoa Falls, which plunge 30 metres to the bush-clad valley below.

GUIDED TOURS Guides are proud Tuhourangi, descendants of the original guides to the Pink and White Terraces prior to 1886. Guided tours leave throughout the day. Allow 30 minutes. Special group tours of 10 or more by arrangement. Guide maps are available in many languages.

TE WAIROA TEAROOMS Visitors can relax and enjoy the best in home-style cooking. Devonshire teas and scones are their specialty. Excellent coffee, delicious cakes, quiches, paninis and fresh salads are available. Seating in the Café, veranda and tea garden for up to 100 visitors.

SMITH'S SOUVENIR STORE See the comprehensive collection of authentic Maori carvings; greenstone and bone jewellery plus an impressive collection of books on New Zealand, Maori myths and legends and beautifully illustrated children's books.

FAMILY FRIENDLY FACILITIES Trout feeding, education kits, children's playground, wildlife and farm animals, baby changing facility, children's discovery room, picnic areas in park.

LOCATION From Rotorua city travel south-east along Te Ngae Road, at the roundabout turn right into Tarawera Road. Enjoy a 15-minute scenic drive past the Blue and Green Lakes to the Buried Village.

OPERATING HOURS Summer 8.30am – 5pm (November – April), Winter 9am – 4.30pm (May – October). Allow 1.5 hours to view.

ADDRESS Tarawera Road, RD 5, Rotorua

PHONE +64 7 362 8287

FAX +64 7 362 8287

EMAIL discover@buriedvillage.co.nz

WEBSITE www.buriedvillage.co.nz



THE HIDDEN VALLEY OF ORAKEI KORAKO

PRICE GUIDE
\$3



Situated 45 minutes south of Rotorua and just 25 minutes north of Taupo and nestled on the shores of Lake Ohakuri lies "The Hidden Valley" of Orakei Korako Cave and Thermal Park. Orakei Korako translated means "The Place of Adorning".

Wander through a valley of unbelievable colour, of bubbling hot springs, gushing geysers and unimaginable natural beauty preserved by its isolation from the outside world. Scenes from the BBC's Natural History Series "Walking with Dinosaurs" were filmed at Orakei Korako. Ruatapu Cave, one of only two geothermal caves known to exist in the world, is an experience not to be missed. It can be found 120 feet down, and a thermal mirror pool is situated at the bottom.

Lonely Planet Travellers Guide writes... "Orakei Korako is possibly the best thermal area left in New Zealand and one of the finest in the world".

Access to Orakei Korako is by boat, at no extra charge. Average sightseeing time is about one hour.

Boats do not run to a timetable, so you may visit the valley as soon as you arrive if you wish.

NEW ZEALAND RIVERJET THERMAL SAFARIS The black jet boat takes you through the magnificent Tutukau Gorge on the 2½ to 3 hours Thermal Safari. You'll have plenty of time to relax and take in the spectacular scenery of the Waikato River, to learn about the Maori culture of this beautiful volcanic area and to hear the fascinating tales

of times gone by. You will see abundant bird life, trout fishing areas, majestic pine forests, open farmlands, steaming volcanic river banks and unspoilt native bush on your way to Orakei Korako the most picturesque geothermal area in the world.

A floatplane service is available from Rotorua and Taupo Lakefronts, transport is available by Paradise Tours Shuttle from Taupo. Riverjet boat tours depart from State Highway 5.

Free overnight campervan parking.

HOURS OF OPERATION Open from 8am. Last boat trip to the thermal area leaves at 4.30pm in summer and 4.00pm in winter.

ADDRESS 494 Orakei Korako Road, Taupo

PHONE +64 7 378 3131

FAX +64 7 378 0371

EMAIL ok@reap.org.nz

WEBSITE www.orakeikorako.co.nz



POLYNESIAN SPA

PRICE GUIDE
from \$



PROFILE

Recognised as a world top ten medical and thermal spa by the prestigious Conde Nast Traveller magazine from 2004 to 2006, Polynesian Spa is New Zealand's leading international spa.

Visitors can experience the wonderful fusion of relaxing hot mineral spring bathing, exquisite spa therapies and picturesque lake views, on the shores of Lake Rotorua.

HOT MINERAL BATHING

With 26 hot mineral pools available, visitors simply choose from one of the four pool areas to suit their requirements.

The Lake Spa is Polynesian Spa's deluxe bathing and relaxation haven. Four shallow hot mineral rock pools of different temperatures (36°C to 42°C), are set invitingly amongst native flora on the edge of Lake Rotorua. A large relaxation lounge with a refreshment bar and lake views, and well-appointed quality changing rooms (providing secure lockers, soap, shampoo, towels and hairdryers) are available for client use.

Just for adults is the large hot mineral adults pool (38°C) that is ideal for light activity, and the three relaxation pools (39°C to 42°C) comprising the Priest Spa, that have renowned acidic mineral water long considered to be therapeutic.

The family spa invites family fun in the large freshwater pool (33°C) complete with a toddler's section and small hydroslide. Overlooking this pool are two hot mineral pools (37°C and 40°C) where adults can relax whilst supervising their children.

Thirteen new private rock pools (replacing the existing pools) will open in December 2006 - four deluxe pools will overlook Lake Rotorua.

SPA THERAPIES

A comprehensive range of indulgent hydro and dry spa therapies are offered in the luxurious and private Lake Spa Retreat. The relaxation therapy range includes the legendary aia spa water massage - available at Polynesian Spa for over 30 years, and dry therapies such as Rotorua mud and kiwifruit soufflé body wraps (appointments are essential). Integral to every spa therapy is bathing in the deluxe Lake Spa.

AND MORE...

To complete the Polynesian Spa experience, visitors can select from an extensive array of spa body products at the Spa Essentials store, and sample healthy spa cuisine and refreshments at the Hot Springs Café.

Conveniently located in central Rotorua in the attractive Government Gardens, Polynesian Spa is within two minutes walk of both the Millennium and Sudima Lake Rotorua Hotels and within five minutes drive of other Rotorua accommodation.

Open 8am to 11pm every day including public holidays (9am to 8pm for spa therapies).

ADDRESS Hinemoa Street, Rotorua

PHONE +64 7 348 1328

FAX +64 7 348 9486

EMAIL info@polynesiandspa.co.nz

WEBSITE www.polynesiandspa.co.nz



RAINBOW SPRINGS NATURE PARK & KIWI ENCOUNTER

PRICE GUIDE
\$ \$



PROFILE

Enjoy the fresh beauty of unique New Zealand native flora and fauna set amongst freshwater springs and streams at one of Rotorua's oldest and most established attractions. You will be able to view wild rainbow and brown trout, native birds, our living dinosaur the tuatara, and national icon the kiwi, set in amongst other wildlife. Enhance your visit with fascinating stories using a stereo quality personal MP3 player providing you with in depth information about all the key points of interest within the park.

Rainbow Springs is now open at night offering customers a night time attraction in Rotorua. Under an array of spectacularly coloured lights you will be amazed at how different the park looks at night.

Recently New Zealand's first outdoor night time walk through kiwi enclosure was opened within Rainbow Springs that allows you to view kiwi at night in their natural environment.

Visit Kiwi Encounter, a unique kiwi hatchery and nursery facility where visitors through a guided tour can "get closer to kiwi" than ever before. This is a first of its kind in New Zealand. Each admission helps to support our kiwi rearing programme.

On your 45 minute tour you will learn a wealth of information about the kiwi bird and it's plight for survival in the wild. Kiwi Encounter is the leading facility in New Zealand at hatching kiwi eggs, to the point now where in its short history the facility is now hatching in excess of 100 eggs a season.

The highlight of the facility must be the tour through the 'open' nocturnal house. View kiwi without glass partitions and only a knee high wall being between you and the rare kiwi bird - a truly memorable experience!!

Why not try some value for money combos as well, allowing you to see even more for less.

OPENING HOURS:

Rainbow Springs open daily - 8am til late.

Kiwi Encounter tours are on the hour every hour from 10am-5pm.

The Café is open from 9am until 4pm.

ADDRESS Fairy Springs Road, Rotorua

NZ FREEPHONE 0800 724 626

PHONE +64 7 350 0440

FAX +64 7 350 0441

EMAIL info@rainbowsprings.co.nz

WEBSITE www.rainbowsprings.co.nz



**RAINBOW
SPRINGS**
NATURE PARK



RIVER RATS RAFTING AND ADVENTURES

PRICE GUIDE
\$ \$ \$



PROFILE

River Rats have been offering quality rafting for over 20 years.

We pride ourselves on a safety first culture and our attention to detail.

With four trips available there's something for everyone, a gentle grade 2 scenic trip suitable for participants as young as five through to full on grade 5 action to satisfy the most adventurous adrenalin seeker.

We are Qualmark and Maritime NZ approved and are foundation members of the Rotorua Sustainable Tourism Charter.

We operate our rafting year round and clients will be supplied with equipment appropriate to the conditions on the day ensuring they are warm and comfortable enough to enjoy the fun.

Complimentary transport is available from anywhere in central Rotorua for all trips except the Wairoa.

Office hours 7.30am – 10pm 365 days.

KAITUNA GRADE 5

Featuring the awesome seven metre Tutea Falls.

As we have two guides per raft this trip is suitable for adventurous beginners. Try it if you dare.

Fact file location – 20 minutes from Rotorua. Allow 2½ hours (excluding travel time). Minimum age – 13 years (conditions apply).

RANGITAHI GRADE 3 - 4

An ideal river for first time rafters. Fun, excitement and sheer solitude, without the steep drops experienced on the Grade 5 rivers.

Fact file location – 45 minutes from Rotorua, 1 hour from Taupo. Allow 4½ hours (excluding travel time). Minimum age – 10 years (conditions apply).

RANGITAHI SCENIC GRADE 2

Great for families and those looking for a more laid back experience. Spectacular scenery, cascading waterfalls & sheer rock gorges clad in native bush.

Fact file location – 45 minutes from Rotorua, 1 hour from Taupo. Allow 4½ hours (excluding travel time). Minimum age – 5 years (conditions apply).

WAIROA GRADE 5

Wild turbulent rapids and exciting drops produce top white water action. This dam release river runs selected Sundays from September to May.

Fact file location – 20 minutes from Tauranga. 2¼ hours from Auckland. Allow 3½ hours. Minimum age – 13 years (conditions apply).

TEAM BUILDING

River rafting requires most of the attributes contained in a traditional team building programmes. We can also customise team building programmes either on or off the water to suit a company's individual goals. References available.

LOCATION Collection point advised at time of reservation

NZ FREE PHONE 0800 333 900

PHONE +64 7 345 6543

FAX +64 7 345 6321

EMAIL rafting@riverrats.co.nz

WEBSITE www.riverrats.co.nz



SKYLINE SKYRIDES ROTORUA

PRICE GUIDE
from \$



Welcome to Skyline Skyrides – Your host for great memories!!! Skyline Skyrides is an all-weather year-round attraction, suitable for all ages. Only five minutes drive from the Rotorua CBD, and set into the side of Mt Ngongotaha, Skyline Skyrides with its world-renowned vista of the city and lake, injects that all important X factor into your day.

GONDOLA – THE MOST SPECTACULAR VIEWS IN ROTORUA

Skyline Skyrides gondola is the best way to see the most spectacular views in Rotorua. With a new eight seater gondola, the first of its kind in the Southern Hemisphere you will enjoy a 487-metre ride up the side of Mt Ngongotaha.

CABLEWAY RESTAURANT – BEST OF NZ

Open for breakfast, lunch and dinner this restaurant is known for its stunning 180 degree views over the city of Rotorua, Lake Rotorua and Mt Tarawera.

The Cableway Restaurant is suitable for every occasion that requires style, a great atmosphere, delicious quality NZ cuisine and an all round wonderful experience.

This venue is fully licensed and offers a wide range of beverages along with a comprehensive selection of top New Zealand wines. Whether it be an international breakfast buffet, lunch or dinner featuring the very popular Best of NZ Buffet and Grill menu which receives rave reviews from guests from all over the world, this venue offers an experience like no other.

LUGE – ONCE IS NEVER ENOUGH

A world first proudly designed and built in Rotorua. This fun-filled gravity ride on a three wheel cart uses a unique steering and braking system providing the rider with full control. With three Luge tracks of varying terrain ranging from the scenic track to the advanced track, the Luge is a great fun-filled family activity.

Additional activities include: The Sky Swing, The Fun Gun, Simply NZ Souvenir Shop, scenic walking tracks and HELIPRO scenic flights. Terraces Café is also available for more casual / alfresco dining.

Open 7 days, 9am – late.

ADDRESS Fairy Springs Road, Rotorua

PHONE +64 7 347 0027

FAX +64 7 348 2163

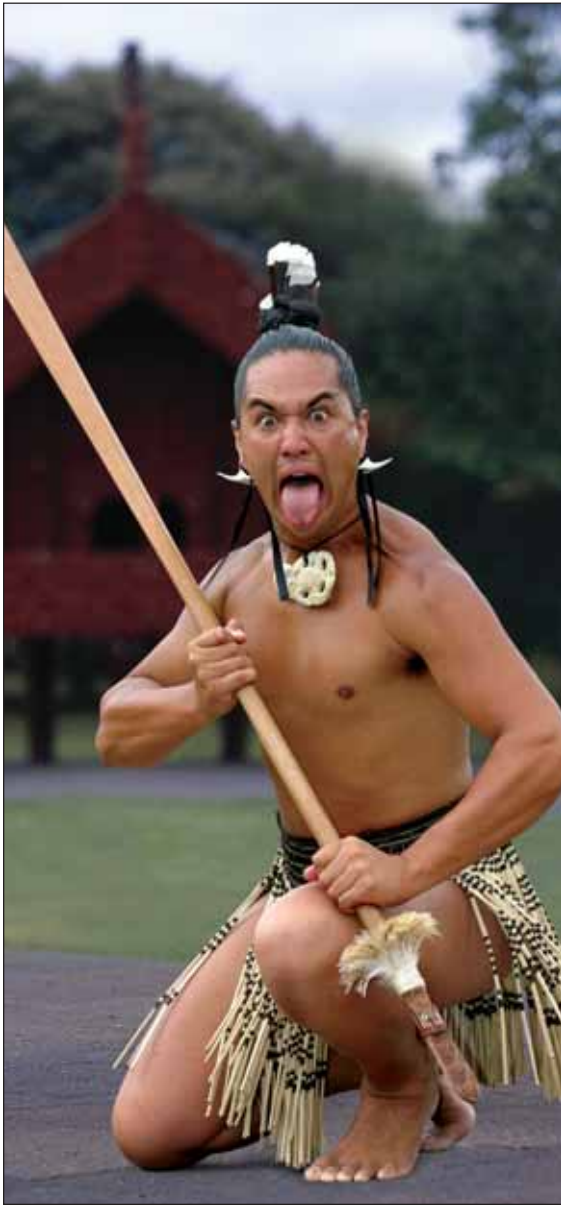
EMAIL enquiries@skylineskyrides.co.nz

WEBSITE www.skylineskyrides.co.nz



TE PUIA

PRICE GUIDE
from \$



PROFILE

Rising from the geothermal valley above mud pools and steam vents is Te Puia – New Zealand's Maori Cultural Centre. The name is taken from the pa, or Maori fort, that once protected the valley and its people.

Today Te Puia is a place where all visitors are welcome and discover its many, unique treasures. Whatever you choose to do at Te Puia, you'll undertake a journey; one that can take you into the heart of Maori culture and discover a truly unique New Zealand experience.

The main aim of Te Puia is to preserve the heritage of Maori people, encourage Maori culture and appreciation, and perpetuate the skills of Maori arts and crafts. Te Puia also provides exhibitions and demonstrations by qualified artists in their respective fields. When you enter Te Puia, you'll sense you're in a special, blessed place and you'll never forget the knowledge, history and experiences you're about to learn.

Te Puia is located in the beautiful Te Whakarewarewa Thermal Valley. See silica terraces, bubbling mud pools and unique geothermal vegetation. View the world famous Pohutu Geyser erupting from the ground up to 30 metres high – an awesome display of mother nature's power. Ten to 20 times a day it bursts into life; a tourist attraction since the early 1900s.

MAI ORA – SONG, DANCE, FEAST

Experience the spirit, the legends, the dance, the song, the food and the warmth that is the essence of Maori culture and hospitality. Held in the atmospheric setting of the Rotowhio Marae, Mai Ora is a relaxed evening of Maori hospitality, song, dance and feast.

From the first spine tingling experience of the traditional Maori welcome (Powhiri) you'll be entertained by performing arts, traditional skills and local stories.

Arrive as strangers, leave as friends. For an unforgettable evening of Maori hospitality and culture, Mai Ora – song, dance, feast.

ADDRESS Hemo Road, (off State Highway 5) Rotorua

NZ FREEPHONE 0800 TE PUIA (837 842)

PHONE +64 7 348 9047

FAX +64 7 348 9045

EMAIL reservations@tepuia.com

WEBSITE www.tepuia.com



NEW ZEALAND'S MAORI
CULTURAL CENTRE

WAIMANGU VOLCANIC VALLEY

PRICE GUIDE
from \$3



PROFILE

In 1886, Mt Tarawera in Rotorua erupted, and destroyed the surrounding area. The eruption opened the earth along a 17km line, splitting Mt Tarawera in two, exploding Lake Rotomahana to 20 times its original size, and forming the seven craters that today make up the Waimangu Volcanic Valley.

Today you can walk through the craters of Waimangu Volcanic Valley to view the amazing geothermal activity and very important botany. Unique volcanic features include 'Frying Pan Lake' the world's largest hot spring; the huge 'Inferno Crater' lake follows a mysterious rhythmic cycle of filling, overflowing and emptying; fractured 'Cathedral Rocks' vent beautiful billows of steam. This is one of the newest Eco-systems in the world and is protected today as a scenic reserve and wildlife refuge.

Take one or two hours to wander along the crater walkways. Inspect the awe-inspiring geothermal activity and thermally adapted plants. Wonderful vantage points show dramatic panoramas. If time permits, voyage around tranquil Lake Rotomahana on a boat cruise that has very low environmental impact. This non-walking option allows you to learn more about Waimangu's explosive history including the Mt Tarawera eruption. View the geothermal activity, which can only be seen from the boat, on the shores of this young lake.

Complete your visit with a stop at the Waimangu Café where you can purchase a picnic to take with you or sample some of the homemade cuisine. Large groups can also be catered for here.

OPERATING HOURS

Walking Tour: open every day 8.30am, last admission 3.45pm (4.45pm January).

Includes: admission, full valley interpretation, use of shuttle bus.

Walking Tour & Boat Cruise: open every day 8.30am, last admission 2pm (3pm January).

Includes: all passage, use of shuttle bus, full valley and boat cruise interpretation.

Boat Cruise only: departs Waimangu Visitor Centre 10am, 11am, 12.50pm, 1.30pm, 2.25pm, 3.15pm (4.10pm January)

Includes: Lake Rotomahana interpretation, shuttle bus to and from the boat and boat passage.

ADDRESS Waimangu Road, (off State Highway 5), Rotorua
PHONE +64 7 366 6137
FAX +64 7 366 6607
EMAIL nature@waimangu.co.nz
WEBSITE www.waimangu.com



BLACK WATER RAFTING

PRICE GUIDE
from \$3



PROFILE Live the legend with New Zealand's original black water rafting operator. Take one of our legendary adventures and explore subterranean rivers that flow through ancient cave systems, whilst seated on an inner tube.

Experience the three hour Black Labyrinth tour and weave, jump and float your way through the glowworm flecked underworld of the Ruakuri Cave. Descend spider-like down into the black depths of Ruakuri Cave and experience the ultimate caving adventure on the five hour Black Abyss trip. All trips include complimentary hot showers, soup and bagel, and free entry to the Museum of Caves.



ADDRESS 585 Waitomo Caves Road, Waitomo Caves
NZ FREEPHONE 0800 CAVING (228 464)
PHONE +64 7 878 6219
FAX +64 7 878 5190
EMAIL info@blackwaterrating.co.nz
WEBSITE www.blackwaterrating.co.nz



CLEARWATER CRUISES

PRICE GUIDE
[CHARTER]



PROFILE Clearwater Cruises offer unique activities in one of New Zealand's most beautiful places, Lake Tarawera. Its crystal-clear waters, fringed by native forest and sandy bays, provides the perfect setting for a variety of exciting land and water-based options.

Step aboard one of our luxury charter vessels, enjoy New Zealand's finest trout fishing, scenic cruising, jet-skiing, water sports, thermal bathing at Hot Water Beach, relaxing and dining. Other activities can be included to complement your cruise.

Whatever the occasion, a small intimate gathering or large group looking for freshwater excitement, you can be assured of the highest standard of luxury, safety and service consistent with the international reputation of your host - Clearwater Cruises.



ADDRESS 537 Spencer Road, Lake Tarawera, Rotorua
PHONE +64 7 362 8590
FAX +64 7 362 8591
EMAIL cruise@clearwater.co.nz
WEBSITE www.clearwater.co.nz



EIGHT BEATING HEARTS

PRICE GUIDE
from \$3



PROFILE For over 150 years Te Arawa (local Maori) have welcomed visitors from around the world. It is a tradition we call 'manaakitanga'.

Today this legacy continues through Maori in Tourism Rotorua – your one-stop contact for personal and interactive cultural experiences.

Explore the stories of our past, our region, and our living culture through these three great products.

EIGHT BEATING HEARTS Unravel the legacy of Rangitahi, the great chief as told through some of the regions best cultural experiences, transcending the past with today.

TE ARAWA AMBASSADORS Be taken on a personalised tour through the eyes of our indigenous local guides.

TE ARAWA HOME-HOSTED DINNERS AND OVERNIGHT STAYS To know us is to share time with our families – come as visitors, leave as friends.

ADDRESS 1106 Arawa Street, Rotorua
PHONE +64 7 349 0972 **FAX** +64 7 349 0971
EMAIL info.mitr@tra.co.nz
WEBSITE www.8beatinghearts.co.nz



HELIPRO

PRICE GUIDE
from \$\$\$\$



FACILITIES HELIPRO scenic flights and excursions feature Rotorua's remarkable volcanic landscape. HELIPRO offer exclusive landings on Mt Tarawera and Mokoia Island as well as guided walking tours on White Island (active marine volcano). Other sights include our renowned thermal reserves and stunning lakes district. All tours include in-depth commentaries and are designed for maximum passenger comfort and scenic value. Our spacious executive style helicopters offer the largest seating capacity in this region. HELIPRO and Unforgettable Rotorua create the region's premier conference and incentive products.

LOCATION Located at Te Puia, Agrodome Leisure Park, and Skyline Skyrides.

OPERATING HOURS Daylight hours. Seven days.

ADDRESS Te Puia, Hemo Road, Rotorua

NZ FREEPHONE 0800 HELIPRO

PHONE +64 7 357 2512

FAX +64 7 357 2502

EMAIL rotorua@helipro.co.nz

WEBSITE www.helipro.co.nz



PRICE GUIDE
from \$\$\$

HELLS GATE THERMAL RESERVE AND WAI ORA SPA



PROFILE New Zealand's authentic, cultural MUD spa located in Rotorua's most active geothermal field.

Of all the geothermal areas, this is the BEAST! See a large variety of volcanic features including steaming fumeroles, boiling mud, exploding hot water and the only mud volcano in New Zealand. See the hot waterfall where Maori warriors bathed to soothe their wounds after returning from battle.

Experience a unique geothermal MUD bath and the health giving sulphurous waters. Indulge yourself with a full body Wai Ora massage incorporating miri miri, traditional Maori massage practised for hundreds of years and unique New Zealand MUD therapy treatments.



ADDRESS Whakatane Highway, SH30 Tikitere, Rotorua

PHONE +64 7 345 4117

FAX +64 7 345 9117

EMAIL bookings@hellsgate.co.nz

WEBSITE www.hellsgate.co.nz



PRICE GUIDE
from \$\$\$

KAITUNA CASCADES



PROFILE Kaituna Cascades is a company of paddlers. We were the original company to explore and paddle the awesome Kaituna River.

We raft the Kaituna, Rangitaiki and Wairoa rivers. Custom-made rafts along with excellent guides ensures you have the safest, most enjoyable and best equipped river trips on offer.

Kayaking options include guided tandem kayaks (Topo's) on the Kaituna, kayak instruction and scenic lake paddles.

Owned and operated by Keith and Chihiro Hughes.

NZ Maritime safety approved.

ADDRESS Trout Pool Road, Okere Falls

NZ FREEPHONE 0800 KAITUNA (524 8862)

FAX +64 7 345 9533

EMAIL kaituna.cascades@clear.net.nz

WEBSITE www.kaitunacascades.co.nz



KAWARAU JET

PRICE GUIDE
from \$\$\$



Kawarau Jet is the world's first commercial jet boating company. There are four great options of action, excitement, scenery and cultural history. From 1/2 hour to 2 1/2 hour trips. From adrenaline and speed to a soak in the Manupirua Hot Springs or a guided tour on the sacred island Mokoia.

• Wet weather canopies and courtesy coach are available if required

• Suitable for all ages

• Open 365 days a year

ADDRESS City Lakefront, Memorial Drive, Rotorua

NZ FREEPHONE 0800 529 272

PHONE +64 7 343 7600

FAX +64 7 343 7900

EMAIL kjetrotorua@xtra.co.nz

WEBSITE www.nzjetboat.co.nz



MITAI MAORI VILLAGE

PRICE GUIDE
from \$\$\$



An evening at Miti will give you an amazing and authentic introduction to the unique Maori culture, one we are proud to share with you.

Be enthralled by the natural bush setting, the power and warmth of the cultural experience and the distinct flavours of the traditional hangi meal. During the cultural performance learn a little about the past of our people including Maori medicine and carvings. Be captivated by the displays of weaponry coupled with the grace and beauty of the poi and the spine tingling finale - the haka. See warriors in traditional dress paddling a waka (ancient war canoe) set amongst spectacular native bush and surrounded by glow worms.

Situated a five minute drive from the city centre Miti is also home to the sacred Rainbow Spring.

Nau Mai, Haere Mai and Welcome.

ADDRESS 196 Fairy Springs Rd, Rotorua

PHONE +64 7 343 9132

FAX +64 7 343 9133

EMAIL reservations@mitai.co.nz

WEBSITE www.miti.co.nz



NEW ZEALAND RIVERJET

PRICE GUIDE
from \$\$\$



New Zealand Riverjet Thermal Safari is the only place in the world where you can jet boat to a thermal reserve. Experience Hamilton 360° spins as you jet boat down the Waikato river through the spectacular Tutukau Gorge. See abundant bird life, pine forests and steaming volcanic river banks on your way to Orakei Korako. Walk around this magnificent thermal reserve and see boiling pools of water and mud, geysers and silica terraces. Total time 2 1/2 hours. Departs daily at 10.30am. Bookings essential.

Includes: One hour jetboating; free entry to Thermal Valley; free tea/coffee; mud pools and geysers.

ADDRESS SH5, Homestead Road, Rotorua

NZ FREEPHONE 0800 RIVERJET (748 375)

FAX +64 7 349 2993

EMAIL sales@riverjet.co.nz

WEBSITE www.riverjet.co.nz

NZONE 'THE ULTIMATE JUMP'

PRICE GUIDE
\$ \$ \$ \$ \$



PROFILE It takes a certain kind of person to jump out of an aircraft into thin air. It takes courage. Harnessed by space-age materials to an experienced tandem master, expect sensory overload as you step out the aircraft door and for 60 seconds freefall towards the ground at 200kph. Tourism Award Winners 2002-2003.

TANDEM SKYDIVE from 9000ft, 12000ft or 15000ft.

OPERATING DETAILS Operating daily weather permitting. Departures hourly. Allow 1½ hours. Courtesy transport provided.



ADDRESS The Skydive Hangar, Rotorua Airport
NZ FREEPHONE 0800 DROP ZONE (376 796)
PHONE +64 7 345 7520
FAX +64 7 345 7569
EMAIL rotorua@nzone.biz
WEBSITE www.nzone.biz



OFF ROAD NZ

PRICE GUIDE
from \$



PROFILE Off Road NZ specialises in off road vehicle-based adventures for thrill seekers, couples, families and incentive groups large and small. 4WD Bush Safari - YOU DRIVE their 4X4 vehicles over exhilarating 4WD trails, Sprint Car Racing - YOU RACE sprint cars on a purpose built track, very fast, very addictive. Monster 4X4 Thrill Ride - YOU HANG ON for the adrenalin rush of your life! The Monster 4X4 has steering both ends, huge tyres, diff locks and adjustable suspension. Plus Claybird Shooting, Archery, Golf Hole-in-1, novelty steering vehicles, team building challenges and a unique outdoor "Native Bush Camp" catering venue.

LOCATION 15 minutes north of Rotorua, just off SH5. Follow the signs.

OPERATING HOURS Open seven days, WET or fine, 9am-5pm or by prior arrangement.



ADDRESS 193 Amore Road, RD2, Rotorua
PHONE +64 7 332 5748
FAX +64 7 332 5510
EMAIL play@offroadnz.co.nz
WEBSITE www.offroadnz.co.nz



PARADISE VALLEY SPRINGS

PRICE GUIDE
\$



Paradise Valley Springs is an internationally-acclaimed trout & wildlife park. Within native bush covered walks are pools of rainbow and brown trout. An underwater viewing cave allows close encounters at eye level. Get close to animals that are common in the New Zealand bush, in a safe and tranquil environment. Natural enclosures allow animals to be hand fed.

In the Lion Park, experience being very close to African lions, and when cubs are born they are available for patting.

OPEN EVERY DAY 8am to 6pm
(Last admission 5pm)
Lion Feeding 2.30pm



ADDRESS 467 Paradise Valley Road, Rotorua
PHONE +64 7 348 9667
FAX +64 7 349 3359
EMAIL paradisev@xtra.co.nz
WEBSITE www.paradisev.co.nz

POHUTU CULTURAL THEATRE

PRICE GUIDE
\$ \$ \$



PROFILE The Pohutu Cultural Theatre provides a showcase of Maori songs, dances and legends followed by a Maori celebration feast, prepared the traditional way, steam cooked in a hangi pit of heated stones and aromatic herbs.

No other indoor venue compares with the purpose-built Pohutu Cultural Theatre, which is air-conditioned for comfort and designed to ensure every seat has a bird's eye view.

A must see experience.

LOCATION Park Heritage Rotorua, Corner Froude and Tryon Streets, Rotorua

NZ FREEPHONE 0800 4 POHUTU (476 488)

FAX +64 7 347 1620

WEBSITE www.pohututheatre.co.nz



RINGS SCENIC TOURS

PRICE GUIDE
\$ \$ \$



PROFILE Fully-guided daily tours are available ex Rotorua and Matamata to visit the original Hobbiton movie set from The Lord of the Rings trilogy. Tours start with a drive through a picturesque working sheep farm with spectacular views of the Kaimai Ranges.

The set has been returned to its natural state, however hobbit holes and some structures are still present.

DEPARTS Twice daily from Tourism Rotorua, Fenton Street - 8.30 and 1.30 - 4.5 hour round trip includes transfer to and from the set, tour and light refreshment. Tours also depart from Matamata Information Centre, 45 Broadway Street - 9.30am 10.45am, 12pm, 1.15pm, 2.30pm (Summer 3.45pm and 5pm). 2½ hour round trip includes transfer to and from the set and tour.



PHONE +64 7 348 0711
FAX +64 7 888 7498
EMAIL office@hobbitontours.com
WEBSITE www.hobbitontours.com



ROTORUA DUCK TOURS

PRICE GUIDE
\$ \$ \$



PROFILE Discover Rotorua onboard our WWII amphibious vehicle able to travel on land and water! The tour begins in town where Rotorua's rich history unfolds before you as you tour local landmarks and share stories and legends of the past.

Highlights include Lake Rotorua, Mokoia Island, geothermal Sulphur Point, Government Gardens, the Museum, Blue Baths and much more.... The adventure continues as you venture out to spectacular lakes area for "SPLASHDOWN" (entry) into Lakes Tikitapu and Okareka. Visit a small lakeside community where the ducks elevation affords magnificent views of Mt Tarawera.

LOCATION Pick up & drop off from I-SITE Visitor Information Centre, Fenton St.

OPERATING HOURS Open from 8am daily.

PHONE +64 7 345 6522
FAX +64 7 345 6527
EMAIL info@ducktours.co.nz
WEBSITE www.rotorua ducktours.co.nz



ROTORUA GOLF CLUB

PRICE GUIDE
\$\$\$



FACILITIES Golf in unique thermal surroundings. Enjoy the well-groomed fairways and manicured greens as you negotiate the sulphur pits, boiling mud pools and steaming lakes of Arikikapakapa. Our friendly staff will arrange all aspects of your golf day, prizes, hire clubs, electric carts and all your catering requirements.

We are close to most major hotels and motels.

LOCATION Southern end of Fenton Street, adjacent to Te Puia.

OPERATING HOURS Open 7 days, from 7am (or earlier by arrangement) to dusk. Reservations are required.

ADDRESS 399 Fenton Street, Rotorua

PHONE +64 7 348 4051

FAX +64 7 348 1384

EMAIL rotorua@golf.co.nz

WEBSITE www.rotoruaclub.co.nz



ROTORUA MUSEUM

PRICE GUIDE
\$



PROFILE Rotorua Museum, where great stories begin...

Discover the essence of Rotorua: its people, culture and volcanic landscape. Unravel the great stories which have shaped this fascinating region.

- The spectacular Bath House building and the history of the Rotorua Spa.
- The rich history and culture of Te Arawa people.
- The eruption of Mt Tarawera and the Pink and White Terraces.
- The story of B Company 28 Maori Battalion, including the moving 30 minute film *B Company Remembers*.
- Guided tours at 9.30, 11am, 1pm, 2.30pm and 4pm daily.
- *Rotorua Stories* active cinema experience.

OPENING HOURS 9am – 8pm (Summer),
9am – 5pm (Winter).

ADDRESS Government Gardens, Rotorua

PHONE +64 7 349 4350

FAX +64 7 349 2819

EMAIL rotoruamuseum@rdc.govt.nz

WEBSITE www.rotoruamuseum.co.nz



RUAKURI

PRICE GUIDE
\$\$\$



PROFILE Laced with myth and legend, Ruakuri 'den of dogs' was first discovered by Maori some 400-500 years ago. It takes its name from the pack of wild dogs that used to inhabit the cave entranceway "Rua" meaning 'den' and "kuri" meaning 'dogs'. For over 18 years the cave was closed to the public and it has reopened again for guided walking tours.

Discover amazing limestone formations, glow worms, an engineering masterpiece, underground rivers, hidden waterfalls, Maori legends and Waitomo's longest guided walking tour! (Tour covers 1.6km of cave passage).

ADDRESS Tours depart from the The Legendary Black Water Rafting Co,

585 Waitomo Caves Road, Waitomo Caves or Rotorua Tourism Centre

NZ FREEPHONE 0800 RUAKURI (782 5874)

PHONE +64 7 878 5903

FAX +64 7 878 5190

EMAIL info@ruakuri.co.nz

WEBSITE www.ruakuri.co.nz



TAMAKI MAORI VILLAGE

PRICE GUIDE
\$\$\$



Your cultural evening experience begins with:

PRE TAMAKI MAORI VILLAGE ENCOUNTER Our story of Maori migration told within a series of magical indoor sets.

BUS (WAKA) TRIP The migration story unfolds as you paddle your waka out to the Village.

WELCOME & PRE-EUROPEAN VILLAGE A significant era re-visited as our family brings to life traditions of the past.

WHARENUI (MEETING HOUSE) & CULTURAL PERFORMANCE A powerful encounter connecting our past with the present through traditional song, dance, myths and storytelling.

HANGI & TRIBAL MARKETPLACE Time for fun and feasting! Food cooked the traditional way beneath the ground on hot rocks.



ADDRESS 1220 Hinemaru Street, Rotorua

PHONE +64 7 349 2999

FAX +64 7 347 2913

EMAIL nadine@maoriculture.co.nz

WEBSITE www.maoriculture.co.nz



THE LIVING WATERS OF WAIKITE VALLEY THERMAL POOLS

PRICE GUIDE
\$



FACILITIES Bathe in chemical-free waters in a friendly, safe and clean environment. Whether it's in the 35°C - 38°C splash pool, the 38°C - 40°C sit 'n' soak pool, or the ambience of our temperature controlled (by you) private pools.

Take a stroll where rare, endangered ferns and mosses grow, and the famous Te-Manaroa Spring discharges the largest volume of boiling water from a single source in New Zealand.

Stay the night in our small but private 20 site campground with kitchen and laundry facilities.



ADDRESS 648 Waikite Valley Road,
RD1, Rotorua

PHONE/FAX +64 7 333 1861

EMAIL thermalpools@xtra.co.nz

WEBSITE www.hotpools.co.nz



VOLCANIC AIR SAFARIS

PRICE GUIDE
from \$\$\$\$



THERE ARE NO ROADS TO THE REAL ROTORUA!

It's your choice!! Experience the thrill of the helicopter or the romance of the floatplane. Combine it with some of the most dramatic & explosive landscapes and you have a scenic air experience that will be the highlight of your stay in this fascinating part of the world.

Highly qualified and experienced pilots will provide you with an in-depth commentary explaining the history and culture of this unique region.

Specialising in individual, group or incentive travel, Volcanic Air Safaris can tailor a charter suited to your individual requirements or select from some of their most popular tours which include stepping foot on an active volcano (White Island).

OPENING HOURS Daylight hours. 7 days.

ADDRESS Rotorua City Lakefront, Rotorua

PHONE +64 7 348 9984

FAX +64 7 348 4069

EMAIL info@volcanicair.co.nz

WEBSITE www.volcanicair.co.nz



WAI-O-TAPU THERMAL WONDERLAND

PRICE GUIDE
\$ \$



FACILITIES Walk at your own pace through New Zealand's most colourful natural volcanic environment absorbing the unique features which include the world famous Champagne Pool, geysers, bubbling mud, steaming ground, expansive vistas, huge volcanic craters and sinter terrace formations. The natural bush setting adds another dimension to the experience, as does the Lady Knox Geyser erupting daily at 10.15am to heights of up to 20 metres. First class facilities include a large café with indoor/outdoor seating and a well-stocked retail centre with quality New Zealand souvenirs catering for all budgets.

OPERATING HOURS 365 days a year. Half day on Christmas Day.

OPENING HOURS 8.30am – 5pm daily. Last admission 3.45pm.

ADDRESS 201 Waitotapu Loop Road, RD3, Rotorua

PHONE +64 7 366 6333

FAX +64 7 366 6010

EMAIL waitotapu@geyserland.co.nz

WEBSITE www.geyserland.co.nz



WAITOMO GLOWWORM CAVES

PRICE GUIDE
\$ \$



PROFILE The moment you enter this subterranean wonderland you'll discover an ancient underground labyrinth and you'll marvel at the amazing limestone formations created by Mother Nature. Experience the wonder of our unique boat trip, gliding silently through the starry wonderland of the Glowworm Grotto, your way lit by a myriad of tiny glow worm lights glittering, glimmering and reflecting off the water.

OPERATING HOURS Open 9am daily. Guided tours depart every half hour from 9am-5pm and 9am – 5.30pm from the end of October to Easter Monday.

ADDRESS Waitomo Caves Road, Waitomo Caves

NZ FREEPHONE 0800 456 922

PHONE +64 7 878 8227

FAX +64 7 878 8858

EMAIL caveinfo@waitomocaves.co.nz

WEBSITE www.waitomocaves.co.nz



WHAKAREWAREWA - THE THERMAL VILLAGE

PRICE GUIDE
\$



PROFILE Set amidst a landscape of erupting thermal springs and bubbling mud pools is the authentic Maori village of Whakarewarewa. Steeped in a rich heritage and offering glimpses into the past, the village upholds the traditions and culture of Tuhourangi/Ngati Wahiao, who have enjoyed sharing their history and way of life with visitors since the 1800s.

KEY VISITOR EXPERIENCES Authentic Maori village, guided tours (9am – 4pm), geothermal activity, Maori cultural performances (11.15am and 2pm), hangi meals (between 12pm-2.30pm), cultural demonstrations, authentic ancestral house, arts and crafts.

OPENING HOURS 8.30am – 5pm 7 days (ex Christmas day).

ADDRESS Southern end of Tryon Street, Whakarewarewa, Rotorua

NZ FREEPHONE 0800 924 426

PHONE +64 7 349 3463

FAX +64 7 347 0100

EMAIL info@whakarewarewa.com

WEBSITE www.whakarewarewa.com



ZORB ROTORUA

PRICE GUIDE
\$ \$



PROFILE Visit the home of the Zorb. Zorbonauts can experience rolling downhill inside a 3.2m, inflatable, plastic orb. Challenge yourself in the harness ride or slip and slop in the wash-cycle. Attempt the latest Zorb challenge, the 'Zig-Zag wash-cycle'! Hydro clothes and towel hire along with city transfers available. Enquire about team building activities and other Agrodome adventures, or our incredible Zorb adventure package deals. Zorbing is suitable for conferences, groups and individuals. Zorbing, a revolutionary experience.

OPERATING HOURS Summer 9am to 7pm. Winter 9am to 5pm

ADDRESS Agrodome, Western Road, Ngongotaha

PHONE +64 7 357 5100

FAX +64 7 357 5102

EMAIL rotorua@zorb.com

WEBSITE www.zorb.com

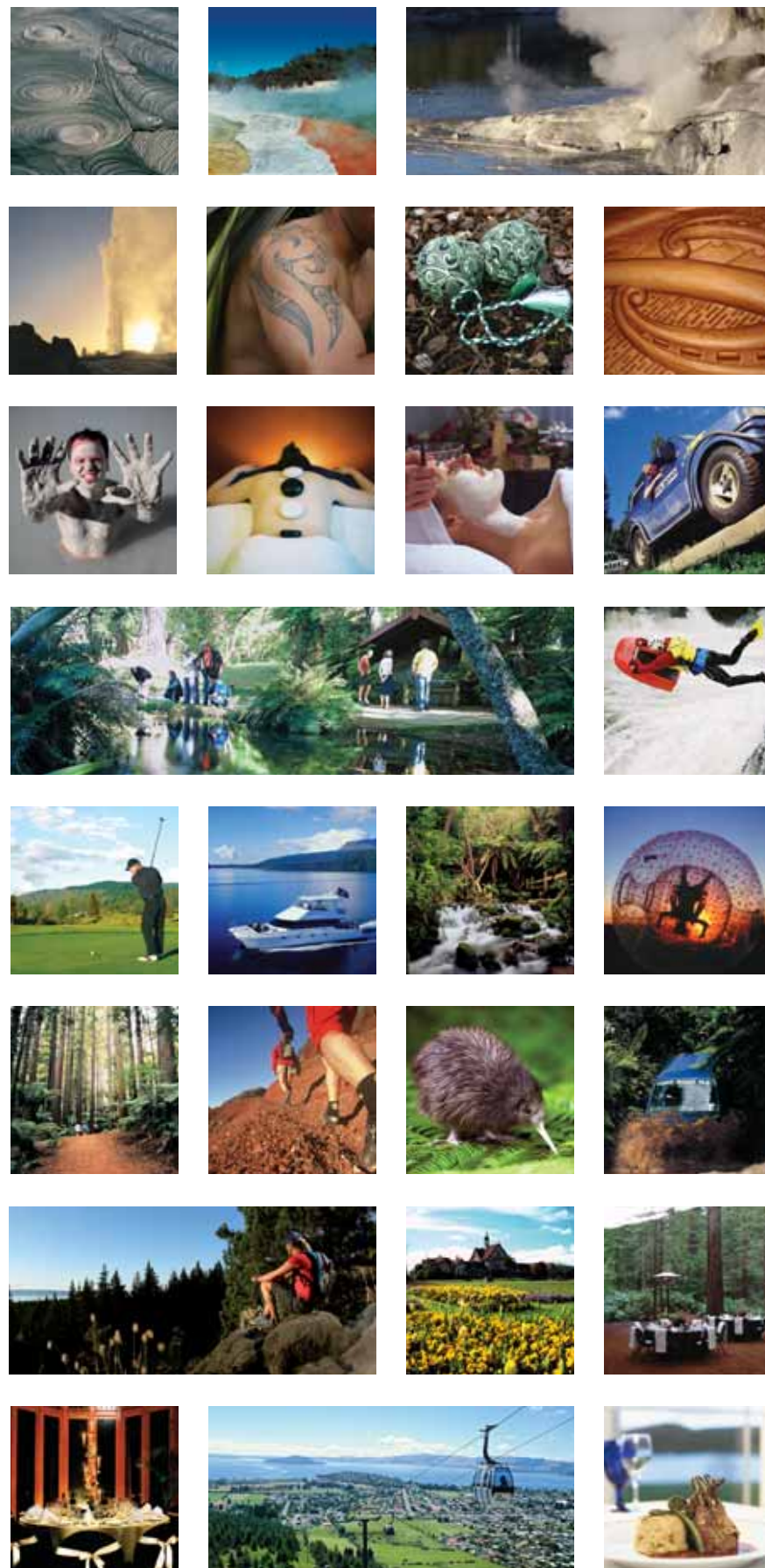


additional attractions and activities

COMPANY	DESCRIPTION	CONTACT
Attraction and Activities		
KAITIAKI ADVENTURES LTD	Raft & sledge with professional crew. Enjoy a taste of culture & adrenaline overload that only Kaitiaki can provide.	www.kaitiaki.co.nz
LAKE TARAWERA WATER TAXI	Visit Hot Water Beach and swim or walk to the Tarawera Falls. Fast and comfortable. Anywhere, anytime. Seats 14.	www.scenicTarawera.co.nz
MAMAKU BLUE BLUEBERRY EXPERIENCE	New Zealand's only blueberry winery and visitor complex. Winery and orchard tours, winetasting, café, museum and function room.	www.mamakublue.co.nz
MT TARAWERA NEW ZEALAND LTD	Guided volcano walks on dormant Mt Tarawera. Gain an insight into the eruption of June 10th 1886.	www.mt-tarawera.co.nz
PAINTBALL NZ LTD / PAINTBALL PARK	New Zealand bush, open combat, adrenaline. Like the real thing with less pain.	0800 770 099 (NZ Freephone)
SPA AT QE	Massages, mud baths & mineral pools for a "healing experience". Open daily until 10pm.	www.qehealth.co.nz
SUNSPOT KAYAKS	Rotorua's only specialist kayak shop for sales, rentals, service and advice.	www.kayakshop.co.nz
TE AMORANGI MUSEUM	"Life and the Land". Maori, pioneer, machinery & forestry displays. Open Thursdays and Sundays.	www.protechnic.co.nz/amorangi
THE GARDEN ART GALLERY	An award winning show garden. Two galleries of Jeanette Blackburn wildlife & landscape art.	www.artgalleryandgarden.com
THE NEW ZEALAND CATERPILLAR EXPERIENCE	More than a load of old bulldozers. A journey through a slice of New Zealand's history.	www.caterpillarexperience.co.nz
THE SPA ROTORUA	Located at Millennium Hotel, Rotorua. Escape from the every day with indulgent beauty and body treatments.	www.millenniumrotorua.co.nz
WAITOMO ADVENTURES LTD	Best blackwater rafting! Amazing Adventures - 100m Lost World abseil; Haggas-Honking-Holes & TumuTumu-Toobing.	www.waitomo.co.nz
WALKING LEGENDS GUIDED WALKS	All inclusive walks in the North Island's largest rainforest and most spectacular national park.	www.walkinglegends.com
WET 'N' WILD RAFTING COMPANY LTD	Wild whitewater adventures to mild scenic floats - Kaituna, Rangitaiki, Wairoa, Motu and Mohaka Rivers.	www.wetwildrafting.co.nz
WHIRINAKI TRAX	Guided walks to the Whirinaki and Urewera forest areas. Transport, and track advice available.	www.getoutthere.co.nz
WINGSPAN BIRDS OF PREY TRUST	New Zealand's only bird of prey centre with falcons, hawks, and owls - aviaries and free flying displays.	www.wingspan.co.nz
Fishing Guide		
BLARNEY LODGE	Guided fly fishing and tuition with	www.blarneylodge.co.nz
BRYAN COLMAN TROUT FISHING	Light tackle trolling, fly fishing, spin fishing.	www.TroutFishingRotorua.com
FISHING GUIDES ASSOCIATION	Listing of professional guides priding themselves on top quality service.	www.fishingnewzealand.co.nz
STILLWATER TROUT FISHING CHARTERS	Lake fishing for trout or bush trekking with Alister aboard "StillWater".	www.troutcatch.co.nz
Tour Guiding		
NATURE CONNECTION NEW ZEALAND	Off the beaten track guided walks and tours in the Rotorua region.	www.natureconnection.co.nz
SUPERIA TOURS NEW ZEALAND LTD	Maori cultural, history, mudpools and geysers. Private tours, small or large groups.	www.superiatours.co.nz
TAYLOR'S TOURS	Fantastic half and full day tours of thermal and surrounding areas. Private charter available.	www.taylorstours.co.nz



Rotorua images



Destination Rotorua Tourism Marketing offers a range of high and low resolution images in RGB or CMYK format.

Go to www.rotoruaNZ.com and click on the Trade and Media home page. Use the click here > option in the Search our Image Library section. Register for a password.

Once received, log onto www.e-see.com and search for Destination Rotorua Images then request use stating what purpose/publication images will be used for. Approval will be granted by Destination Rotorua Tourism Marketing (the same day where possible) if appropriate.



services and transport

TOURISM ROTORUA INFORMATION & TRAVEL OFFICE



ROTORUA STARTS HERE AT THE TOURISM ROTORUA INFORMATION & TRAVEL OFFICE.

Contact Tourism Rotorua for information on Maori hangi & concert, Rotorua sightseeing & adventure tours, scenic air & helicopter flights, rafting tours, 4wd tours, lake cruises, tandem skydiving, horse riding, jet boats and accommodation. Anything you can see and do around Rotorua.

Help is also available with information for the rest of New Zealand, including Interisland Ferry, rail, air flights, rental cars, Intercity & Newmans bookings, Guthreys coachlines, coach tours, accommodation, activities & sightseeing.

The Centre also offers Travelex currency exchange services and Simply New Zealand - The Great New Zealand Shop, where an extensive range of New Zealand souvenirs are available.



Whether it be a group itinerary, mystery weekend, conference, event, reunion, team building weekend... The Organiser does it all. Here to advise, plan and manage the running of your conference/event so you can concentrate on the most important aspect – content. Ensure your conference is a success – you make the decisions, they deliver. The Organiser will make your event truly memorable by providing expertise, creative planning, commitment and professionalism. Situated in the



Tourism Rotorua building, The Organiser offers a service for group bookings, conferences, incentives, partner programmes, pre and post touring and events catering for both the domestic and international market. The Organiser offers a variety of services for groups including conference & event management, itinerary planning, accommodation bookings, sights and travel throughout New Zealand. The Organiser has a motivated, specialized team to assist your group.

For more details contact Debbie Wootton on +64 7 343 1732, Debbie@rotoruaNZ.com or visit www.theorganiser.co.nz.

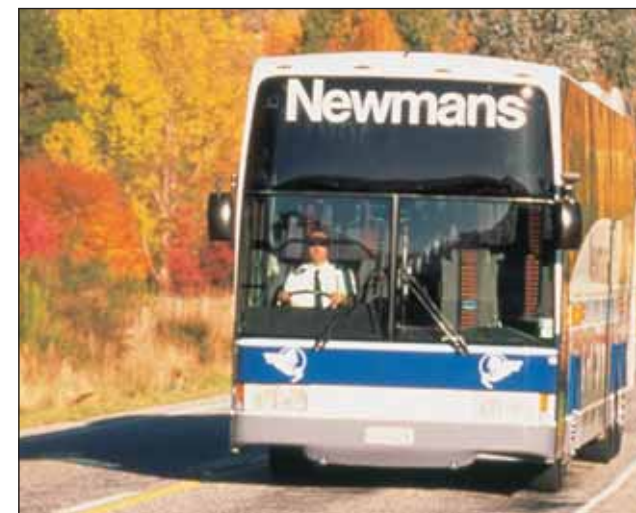
OPENING HOURS - 7 days 8am to 5.30pm.

LET TOURISM ROTORUA TAILOR MAKE A PACKAGE FOR YOU OR YOUR GROUP.

ADDRESS 1167 Fenton Street, Rotorua
NZ FREEPHONE 0800 ROTORUA (768 678)
PHONE +64 7 348 5179
FAX +64 7 348 6044
EMAIL isite@rotoruaNZ.com
WEBSITE www.rotoruaNZ.com



NEWMANS | INTERCITY



NEWMANS COACH LINES

For over 125 years Newmans Coach Lines has been at the forefront of New Zealand's tourist transport industry. With more than 20 daily services and over 1000 seats available nation wide, Newmans Coach Lines provides New Zealand's largest tourist focused network. Experience the wonder of Rotorua with local professional coach captains. Enjoy luxury daily sightseeing services and experience Maori culture, mud pools, geysers and the famous Agrodome show. As an alternative enjoy a day return trip to the enchanting Waitomo Caves.

* Free hotel pick up and drop off * Daily departures to Auckland and throughout New Zealand.

LOCATION All services depart daily from Tourism Rotorua, 1167 Fenton Street, including Rotorua sightseeing, Waitomo sightseeing and tourist connections to Auckland, Napier and Wellington.

OPERATING HOURS National contact centre open 365 days 7am – 9pm

PHONE +64 9 623 1504
FAX +64 9 638 5774
EMAIL info@intercitygroup.co.nz
WEBSITE www.newmanscoach.co.nz



INTERCITY COACH LINES

New Zealand's largest transport network connecting 650 town and cities nationwide.

With over 10 services per day traveling through Rotorua, InterCity is the best way to get around New Zealand. Flexi-Pass provides total freedom to travel throughout the network and works just like a prepaid phone card. Travel is calculated in hours and can be topped up at anytime and can be self managed online. www.flexipass.co.nz

Over 130 services operating daily across the country.

LOCATION All services depart daily from Tourism Rotorua 1167 Fenton Street.

OPERATING HOURS National contact centre open 365 days 7am – 9pm

PHONE +64 9 623 1503
FAX +64 9 638 5774
EMAIL info@intercitygroup.co.nz
WEBSITE www.intercitycoach.co.nz



GREAT SIGHTS



PROFILE Great Sights is the premier coach operator for sightseeing and touring around New Zealand. Choose from morning, afternoon and full-day luxury sightseeing tours of Rotorua's leading attractions. Visit thermal reserves with boiling mud pools and mighty geysers, experience Maori culture and much more. Alternatively enjoy a return day-trip from Rotorua to the mystical Waitomo Glowworm Caves. • Daily departures • Photo stops • Dedicated team of experienced drivers • Courtesy transfers.

OPERATING HOURS Daily luxury coach sightseeing tours. 24 hour reservations.

ADDRESS Rotorua sightseeing tours depart daily from Tourism Rotorua, 1167 Fenton Street
NZ FREEPHONE 0800 744 487
PHONE +64 9 306 7633
FAX +64 9 379 6649
EMAIL reservations@greatsights.co.nz
WEBSITE www.greatsights.co.nz



additional services and transport listing

COMPANY	DESCRIPTION	CONTACT
GALLERIES & SOUVENIRS		
BEST OF MAORI TOURISM LTD	Gifts of excellence and Maori designed clothing.	www.nativeartsnz.com
JADE FACTORY RETAIL LTD	Biggest selection of jade carvings, jewellery with the best in contemporary designs.	www.jadefactory.com
ROZCRAFT LTD	Manufacturing wholesalers of New Zealand made and imported souvenirs and promotional items.	www.rozcrafft.com
SCHOLES GALLERY	New Zealand focused gift lines. Located at the entrance to Whakarewarewa Thermal Village.	+64 7 348 2219
SIMPLY NEW ZEALAND	A New Zealand owned gift and souvenir store under the clock tower at the Tourism Centre.	www.simplynewzealand.co.nz
TE RAUKURA, THE RED FEATHER GALLERY	Authentic New Zealand maori arts and crafts.	www.nativeartsnz.com
DINING		
AMAZING THAI RESTAURANT	Sample the delights of award winning chef, Prasert Janlar. Fully licensed, BYO, takeaway and delivery.	+64 7 349 0911
CAPERS EPICUREAN	Capers provides fresh quality food and great service. Breakfast, lunch, dinner, coffee and take home meals.	www.capers.co.nz
GREAT THAI TAKEAWAY AND DINING	Opening Aug 2006. Large groups a speciality. Buffet available. Fully licensed, BYO, takeaway and delivery.	+64 7 349 0909
LIME CAFFERERIA	Cafe open 7 days 8am-4pm. Breakfast, brunch, & lunch. Licenced.	+64 7 350 2033
LONESTAR ROTORUA LTD	Tex-mex style cuisine and themed restaurant.	www.lonestar.co.nz
NZ FARMVIEW RESTAURANT LTD	Restaurant catering to large or medium sized groups for lunch and dinner. Bookings essential.	www.agrodome.co.nz
PIG AND WHISTLE	A bar with atmosphere, historical charm and style.	www.pigandwhistle.co.nz
WILD RICE THAI CUISINE	Great dining in an intimate restaurant. Data projector available. Fully licensed, BYO, takeaway and delivery.	+64 7 349 6482
SUPPORT		
DYNAMICS AUDIO VISUAL LTD	Your audio visual solution, your one stop shop. Equipment hire, sales, service, technicians/operators.	+64 7 343 6164
REVIVE BEAUTY & HAIRDRESSING STUDIO	For all your waxing, tanning, tinting, facial, manicure, pedicure, massage and hairdressing requirements.	+64 7 348 8601
WAIARIKI INSTITUTE OF TECHNOLOGY	A government owned institution specialising in applied vocational training.	www.waiariki.ac.nz
TRANSPORT		
AIR NEW ZEALAND	Regular scheduled air services from Auckland, Wellington, Christchurch, and Queenstown.	www.airnewzealand.co.nz
BUDGET RENT A CAR - ROTORUA	A range of late model cars, vans and 4WDs. 49 locations nationwide. Free hotel delivery.	www.budget.co.nz
DAVE'S SHUTTLE & TOURS	Shuttle service to Waiotapu Thermal Wonderland and Waimangu Volcanic Valley.	+64 27 210 0222
GEYSER LINK TOURS	Morning transport service to Waiotapu and Waimangu. Afternoon service to Waiotapu and Hell's Gate.	www.geyserlink.co.nz
GUTHREYS EXPRESS	Guthreys Express operates two daily transport services between Rotorua - Hamilton - Auckland.	www.pavlovich.co.nz
JOHN ALLISON TRANSFERS & TOURS	Limousine and mini coach tours and transfers from anywhere to anywhere. One to 11 passengers.	+64 27 459 5164
QANTAS	Daily jet services operate to Rotorua from Queenstown and Christchurch.	www.qantas.co.nz
RANDOM ADVENTURES SHUTTLE	Daily shuttle to Whakarewarewa, Te Puia, Skyline Skyrides, Rainbow Springs, Zorb and Agrodome.	+64 21 118 6322
REESBY COACHLINES LTD	Tour coaches, conferences and incentive groups.	www.reesby-buses.co.nz
SUPERSHUTTLE	Supershuttle is the most cost effective way to transfer between the Rotorua airport and your hotel.	www.supershuttle.co.nz
THRIFTY CAR RENTALS	Thrifty Rental Cars is Australasia's fastest growing rental car company.	+64 7 345 7756

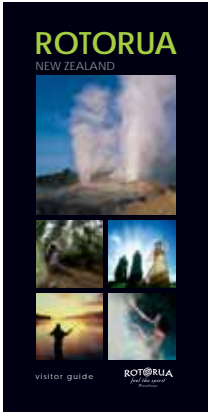
trade resources

To obtain free copies of any of the following sales aids simply indicate what you require, quantities and your postal address. Email to marketing@rotoruaNZ.com or fax +64 7 349 4133.

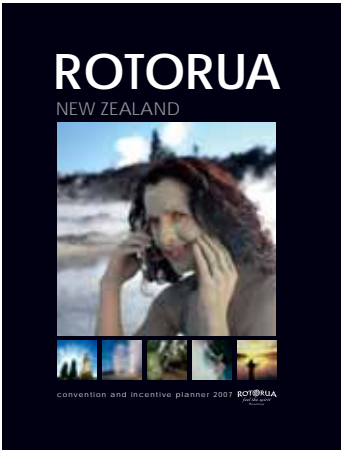
TRADE DVD A short, highly visual DVD for promotional and training use.



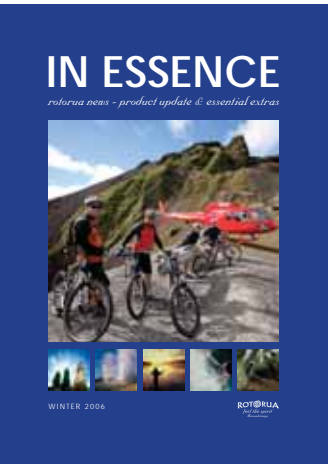
ROTORUA VISITOR GUIDE A comprehensive guide to Rotorua attractions, accommodation options and support services.



ROTORUA CONVENTION AND INCENTIVE PLANNER Comprehensive guide to planning conferences and incentives.



ROTORUA BACKPACKER GUIDE Information for backpackers and adventure travellers on how to get around, where to stay and what to do.



IN ESSENCE Published twice a year, In Essence updates Trade and Media on what's new in Rotorua.



GNZTR PRODUCT MANUAL Perfect for clients who like to self drive. This product manual covers the Central North Island.



STREAMING VIDEO www.rotoruaNZ.tv is an online streaming multi-channel video broadcast available 24 hours a day, seven days a week. The site plays continuous internet video footage centred on Rotorua's attractions, activities, accommodation options as well as news and events info.

advertiser index

COMPANY	MAP REF.	PAGE
ACCOLADES BOUTIQUE HOTEL	4	22
AGRODOME	7	36
A-KAHU	14	28
BLACK WATER RAFTING	37	45
BURIED VILLAGE	24	37
CLEARWATER CRUISES	19	45
DUXTON HOTEL OKAWA BAY RESORT	3	28
EIGHT BEATING HEARTS	40	45
ESSENCE OF NEW ZEALAND	20	28
GRAND TIARA	53	29
GREAT SIGHTS	35	58
GWENDOLINE MOTOR LODGE	52	27
HELIPRO	60	46
HELLS GATE AND WAI ORA SPA	5	46
HIDDEN VALLEY OF ORAKEI KORAKO	29	38
IBIS HOTEL ROTORUA	32	25
INTERCITY & NEWMANS COACHLINES	33	57
KAITUNA CASCADES	1	46
KAWAHA POINT LODGE	15	29
KAWERAU JET	31	47
KINGSGATE HOTEL ROTORUA	51	29
KOURA LODGE	16	30
LODGE AT 199	23	22
MILLENNIUM HOTEL ROTORUA	46	30
MITAI HOLDINGS	10	47
NEW ZEALAND RIVERJET	28	47
NZONE THE ULTIMATE JUMP	12	48
OFF ROAD NZ	8	48
OKAREKA LAKE HOUSE	21	30
PARADISE VALLEY SPRINGS	17	48
PARK HERITAGE HOTEL	55	23
PEPPERS ON THE POINT	10	31
POHUTU CULTURAL THEATRE	55	49
POLYNESIAN SPA	45	39
PRINCES GATE HOTEL & MAYFAIR APARTMENTS	42	24
QUALITY HOTEL GEYSERLAND	57	27
QUALITY RESORT HERITAGE	54	27
RAINBOW SPRINGS NATURE PARK & KIWI ENCOUNTER	13	40
RINGS SCENIC TOURS LTD	39	49
RIVER RATS RAFTING	2	41
ROTORUA DUCK TOURS	34	49
ROTORUA GOLF CLUB	56	50
ROTORUA MUSEUM	43	50
ROYAL LAKESIDE NOVOTEL	21	25
RUAKURI	40	50
RYDGES ROTORUA	49	31
SKYLINE SKYRIDES	9	42
SOLITAIRE LODGE	18	31
SUDIMA HOTEL LAKE ROTORUA	47	26
TAMAKI MAORI VILLAGE	44	51
TE PUIA	59	43
THE LIVING WATERS OF WAIKITE VALLEY THERMAL POOLS	26	51
THE SPRINGS	50	32
TOURISM ROTORUA TRAVEL CENTRE	37	56
TREETOPS LODGE AND ESTATE	22	32
VENTURA INN & SUITES ROTORUA	48	32
VOLCANIC AIR SAFARIS	30	51
WAIMANGU VOLCANIC VALLEY	25	44
WAI-O-TAPU THERMAL WONDERLAND	27	52
WAITOMO GLOWWORM CAVES	36	52
WHAKAREWAREWA - THE THERMAL VILLAGE	58	52
ZORB ROTORUA	6	53



ROTORUA



We'll fly you
to New Zealand.
Then show you
the country.



The Airline that connects New Zealand from over 120 cities worldwide, also offers a domestic service.*
For more information call your licenced travel agent, local Qantas office or visit us at www.qantas.com

*Flights are operated by Jetconnect Ltd for Qantas



ROTORUA
feel the spirit
Manaakitanga

DESTINATION ROTORUA TOURISM MARKETING

ADDRESS 1106 Arawa Street, Private Bag 3007, Rotorua

PHONE +64 7 348 4133 **FAX** +64 7 349 4133

EMAIL marketing@rotoruaNZ.com

WEBSITE www.rotoruaNZ.com